



The Specialist In Drum Handling Equipment

S&G Enterprises, Inc.

800-233-3721 / 262-251-8300

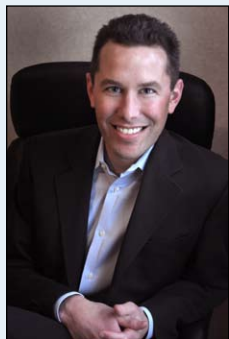
www.ramflat.com/morse



Inside

	Page
What's New?	2
MORCINCH™ Drum Handling System	3
Drum Cones	3
Hydra-Lift Karriers	4
Vertical-Lift Drum Pourers	5
Power-Propelled < PILOT >	5
Forklift-Karriers	6
MORSPEED™ Forklift Attachments	7
Fork Mounted Drum Rackers	7
Below-Hook Kontrol-Karriers	8
Below-Hook Drum Lifters	9
Drum Tumblers	10
Drum Rollers	11
Drum Rackers	12
Drum Palletizers	13
Mobile-Karriers	13
Clamp+GO™ Dolly Handle	14
Drum Dollies	14
Drum Trucks & Cradles	14
PailPRO™ 5-Gallon Pail Handlers	15
Drum Heaters and Pail Heaters	16
Drum Faucets	16
Drum Wrenches	16
Drum Hand Pumps	16

You get MORE with MORSE



Since 1923 Morse Manufacturing has been dedicated to giving you more - and in today's world of increased domestic and international competition you should expect more. What can you expect from Morse Manufacturing?

- **Customer Service:** Expect personal attention from one of our customer service representatives. Visit the Company Directory on our web site, give us a call and let us get to know you personally.
- **Dealer Support:** We value your time and your knowledge! You can expect assistance with any drum-handling question when you contact us.
- **Product Support:** If you have a technical question, expect to speak with one of the design engineers themselves. We strive to make sure you get the product that meets your needs.
- **Product Selection:** Morse offers the most extensive line of drum-handling equipment. If you don't see what you need in our standard offering, our custom capabilities will help to meet your needs.
- **Product Quality:** Every Morse Product design was professionally engineered inhouse to exceed industry standards. You see foreign products that look like a Morse? Know with confidence who designed the original! We are so confident in our products, our skilled employees, our certified welders, and our production process that we offer a 2-Year Guarantee against all defects.
- **Product Information:** Current and informative product literature and parts diagrams. Visit the literature pages on our web site. We labor tirelessly to keep our literature up to date and you informed of any product introductions or changes.
- **History:** With a history of over 90 years, you can expect us to provide you with replacement parts or product upgrades when you need them in the future - 5, 10, or 20 years from now. Morse is committed to manufacturing our products in the USA.

Thanks for considering Morse for your drum handling needs. Please feel free to contact us.

Nathan Andrews

President

Phone: (315) 437-8475

Email: info@morsedrum.com

What's New?



MORSPEED **1000**

Capacity: 1000 Lb. (454 kg)

The New **MORSPEED 1000**™ Forklift Attachment allows you to lift and move a drum without leaving your fork truck. Raise and lower the forks to grab and release a drum. Handle a rimmed plastic, steel or fiber drum with lid on and secure.

Move More Drums with **MORSPEED**™

See page 7



- Thorough "corner-over-corner" mixing right inside a drum
- Tumble a steel, plastic or fiber drum
- Load with crane or hoist

See page 10



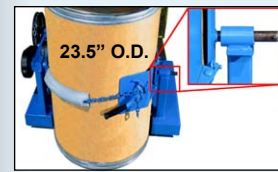
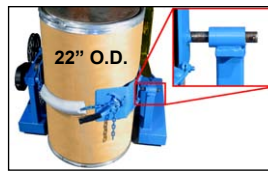
Drum Tumbler™
and Control Package



Drum Palletizers **with Geared Drum Tilt**

- Lift, Raise and Pour a Drum
- Palletize with V-shaped base
- Hand Crank Geared Tilt to dispense drum
- Rotate drum 360° in either direction
- Pour up to 26" high
- Add **MORStop Tilt-Brake**™ Option to automatically lock pouring angle

See page 13



MORCINCH™ Drum Holder automatically adjusts for 22" to 23.5" (56 to 59.7 cm) diameter drum



Flexible cinch chain cover enhances grip and helps protect drum sidewall. . .



. . .or order Web Strap and Ratchet option

Options to Handle Almost Any Drum

A Rimmed Plastic 55-Gallon Drum: Top Rim Clamp



Install the **Top Rim Clamp** (part # 4560-P) onto the MORCINCH™ drum holder. It grips the upper rim of the drum to prevent it from slipping in the drum holder.

Spark Resistant part # 4560M-P
Stainless Steel part # 4560SS-P

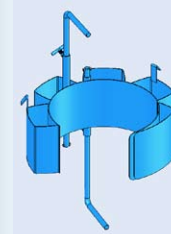
A Rimless Plastic or a Fiber Drum: Bracket Assembly



Bolt the **Bracket Assembly** (part # 4556-P) onto the MORCINCH™ drum holder as a brace at top and bottom of drum to prevent it from slipping in the drum holder. Adjusts for 31" to 39" tall drum.

Spark Resistant part # 4556M-P
Stainless Steel part # 4556SS-P

Smaller Drums: Diameter Adaptors

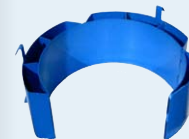


Diameter Adaptor

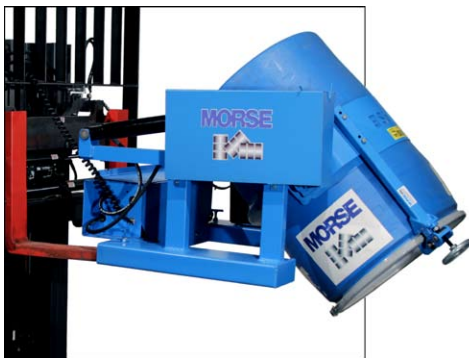
To handle multiple drum sizes with the same drum handler, add the correct size Diameter Adaptor for each smaller drum. Simply and quickly place into and remove from the MORCINCH™ drum holder.

Adaptors for 17.5" diameter and smaller have adjustable hold-down brackets for up to a 38" tall drum.

Stainless steel and spark resistant adaptors also available.



Model 55/30-19



Carbon Steel	Spark Resistant	Stainless Steel	Fits Diameter
55/30-22	55/30M-22	55/30SS-22	21.5" to 22"
55/30-20.5	55/30M-20.5	55/30SS-20.5	20" to 20.5"
55/30-19	55/30M-19	55/30SS-19	18.5" to 19"
55/30-17.5	55/30M-17.5	55/30SS-17.5	17" to 17.5"
55/30-16	55/30M-16	55/30SS-16	15.5" to 16"
55/30-14.5	55/30M-14.5	55/30SS-14.5	14" to 14.5"

Drum Cones



45° Drum Cone, Iris Valve, and Clamp Collar

and valves to control the pour of dry materials and reduce dust through a 6" discharge opening. Each cone is sized for a specific drum diameter steel or fiber drum. Available from 15.5" diameter up to 23.5" (39.4 to 59.4 cm). Centered cones have 45° angle or 60° angle. Asymmetric cone is offset.

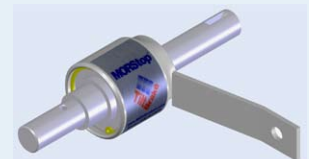


Asymmetric Drum Cone, Iris Valve, Extension Tube and Clamp Collar



Stainless Steel 45° Drum Cone, Slide Gate, and Clamp Collar

Example Model #	Description
5-VF-45-23	45° Drum Cone, Size # 23
5-VF-60-23	60° Drum Cone, Size # 23
5SS-VF-45-23	45° Stainless Drum Cone, Size # 23
5-VF-90-23	Asymmetric Drum Cone, Size # 23
IV	Iris Valve
SG	Slide Gate
SG-SS	Stainless Slide Gate
XT	6" Extension Tube
XT-SS	6" Stainless Steel Extension Tube
7-23	Clamp Collar, Size # 23
7SS-23	Stainless Clamp Collar, Size # 23



We recommend the MORStop Tilt-Brake™ to automatically hold the drum tilt angle and prevent uncontrolled turning, even when drum contents shift.

Option 3900i-P
MORStop Tilt-Brake™ factory installed on manual tilt drum handler

Hydra-Lift Karriers

Lift an 800 Lb. drum and pour up to 96" high

VIDEOonline

Model 400A-96-110
96" Max. pour height,
AC power lift and tilt



Model 400A-72
72" Max. pour height,
hand pump drum lift,
chain wheel drum tilt.
Option # 4556-P
Bracket Assembly



Model 400A-96SS-125
Stainless Steel frame,
96" Max. pour height,
Battery power lift, manual tilt

- Lift, move and pour a drum up to 8' high
- Models with power lift and tilt
- Rotate drum 360° in either direction
- The **MORCINCH™** Drum Handling System handles various sizes of plastic, steel or fiber drum (page 3)
- All models available in type 304 Stainless Steel

Safety conscious way for one person to easily handle a heavy drum. You control the drum tilt angle to dispense the contents. Attach a faucet or drum cone to control dispensing.

The **MORCINCH™** Drum Holder automatically adjusts for 22" to 23.5" diameter drum, and accepts **MORCINCH™** options (page 3) for plastic or fiber drum, and Diameter Adaptors for smaller drums.

Order Hydra-Lift Karriers with AC, DC or Air power lift and tilt.

Spark resistant models available.

Heavy-Duty Hydra-Lift Karriers

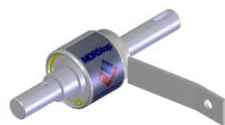
Lift a 1200 Lb. drum and pour up to 72" high

VIDEOonline

Heavy-Duty Hydra-Lift Karriers feature a twin boom overhead assembly with two lift cylinders. The lower frame has parallel legs and nylon wheels. Features the **MORCINCH™** Drum Handling System (page 3).



Model 410-110
with electric
power lift and tilt



Install **MORStop Tilt-Brake™** option to automatically prevent unwanted drum tilting

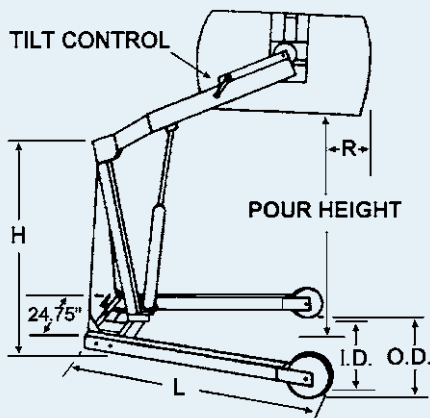
Manual Tilt Control Options

Option #	Description
X01	Hand Crank and MORStop Tilt-Brake™
X02	Hand Crank
X03	16" Diameter Hand Wheel
3900i-P	MORStop Tilt-Brake™ factory installed on new unit
3900-P	MORStop Tilt-Brake™ field install on existing unit

Power Options

Option #	Description
110	AC Power Lift and Tilt
114 *	Air Power Lift and Tilt
115	Battery Power Lift and Tilt
120	AC Power Lift, Manual Tilt
124 *	Air Power Lift, Manual Tilt
125	Battery Power Lift, Manual Tilt

* Requires Filter, Regulator, Lubricator (part # 3869i-P)

Dimensions (refer to chart)**Dimensions**

Model #	Capacity	Pour Height	R (Reach)	H (Height)	L (Length)	O.D.	I.D.	Tilt Control
400A-60	800 Lb.	72"	6"	55"	60"	44"	37"	Hand Crank
400A-72	800 Lb.	72"	6"	55"	60"	44"	37"	Chain Wheel
400A-96	800 Lb.	96"	- 4"	69"	72.5"	49"	42"	Chain Wheel
410	1200 Lb.	72"	1"	53"	60"	36"	27"	Chain Wheel

Manual lift and tilt models have hand pump drum lift, and manual drum tilt control.

VIDEOonline



Vertical-Lift Drum Pourers

- Lift, move, weigh and pour a drum up to 106" high
- Easy to maneuver with tight turning radius
- Compact base provides small foot print
- Lifts drum straight up
- Rotate drum 360° in either direction
- Features **MORCINCH™** Drum Handling System
- Scale-equipped models available

Vertical-Lift Drum Pourers allow you to control the lift height and pouring angle of your drum weighing up to 800 Lb. Rotate a drum 360° in either direction, and pour up to 106" high. Power lift and tilt provide easy, ergonomic drum handling.

The **MORCINCH™** Drum Holder automatically adjusts for 22" to 23.5" diameter drum, accepts **MORCINCH™** options (page 3) for plastic or fiber drum, accepts various Diameter Adaptors for smaller drums, has a flexible chain cover to help protect the sidewall of your drum, and includes safety covered gears. Stainless steel models, and spark resistant models also available.

Scale-Equipped Vertical-Lift Drum Pourers

Allow you to weigh as you pour! Eliminate the need to move a drum to a separate scale. Dispense exactly how much you need as you view drum weight on built in scale indicator.

Two Scale Types Available



"T" Type Intrinsic safe scale indicator for use in hazardous areas.



"N" Type scale indicator NOT for hazardous environments.



Models made of type 304 stainless steel are often required in food and pharmaceutical applications.



Model 515-T-114

Has 60" pour height, is scale-equipped with intrinsically safe indicator, and has air power lift and tilt.

Model 520-110
106" pour height, AC power lift and tilt

Example Vertical-Lift Drum Pourers			
Model #	Pour Height	Scale Type	Power Option
510-115	60"	No Scale	115
520-125	106"	No Scale	125
515-T-114	60"	T	114
525-N-124	106"	N	124



Power-Propelled Drum Handlers

VIDEOonline

Model # 900 < PILOT > Power Propelled Drum Pourer

Transport, lift and dispense a drum up to 10.5 feet (3.2 m) high! Fully invert drum in just 8 seconds.

Accepts **MORCINCH™** options (page 3) to handle any drum.

Capacity is 1500 Lb. (680 kg).

Model # 905 < PILOT > Scale-Equipped Power Propelled Drum Pourer

Adds scale to weigh drum during pour to dispense just the amount needed. Capacity is 800 Lb. (363 kg).

Familiar controls for propulsion and steering. Raise and Lower Buttons built into handle. Straddle pallet up to 50" (127 cm) wide. Adjust for various pallet sizes. Built-in battery charger plugs into standard 110V AC outlet.



Model # 915 < PILOT > **MORSPEED™** Drum Mover / Stacker

Lift and move an upright drum up to 9.5 feet (2.9 m) high!

Proven **MORSPEED™** drum grabber is a safety conscious method of handling almost any rimmed drum.

Completely mechanical and automatic drum grab does not require any manual contact with drum. Mechanism automatically releases drum when you set it down. Capacity is 1500 Lb. (680 kg).



Model # 910 < PILOT > **MORStak™** Drum Racker

Rack a rimmed 55-gallon (208 liter) steel or plastic drum up to 10.5 feet (3.2 m) high!

MORStak™ Drum Racker to move drums on and off racks, pallets, etc. Lift an upright drum and tilt to place in horizontal position. Rack drums side-by-side with virtually zero clearance between them. Lift drum with faucet in place to use rack as a dispensing station.

Capacity is 800 Lb. (363 kg).



Model 285A Forklift-Karrier

Has 800 Lb. capacity. You control drum tilt with 30:1 ratio gear and sprocket drive. Features the **MORCINCH™** Drum Handling System (page 3) with options to handle a plastic drum, fiber drum, or various smaller drums.

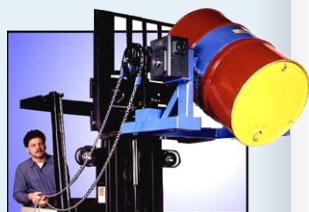
Model 285A-HD Heavy-Duty Forklift-Karrier

Handle drum up to 1500 Lb. Provides finer tilt control with 60:1 ratio gear and sprocket drive. Features **MORCINCH™** Drum Handling System (page 3) to handle almost any drum.



Model 285A-GR Extra Heavy-Duty Forklift-Karrier

Provides 2000 Lb. capacity with an enclosed worm gear speed reducer for drum tilt control with 150:1 ratio. It has two web straps to secure the drum in the holder.



Model 285XGR Super-Duty Forklift-Karrier

Handle extremely heavy drum up to 2500 Lb. Designed with a heavily reinforced 3-piece drum holder, and an enclosed worm gear speed reducer with 150:1 ratio for drum tilt control.



- Lift, move, and pour a drum with your forklift
- Rotate drum 360° in either direction
- Models with **MORCINCH™** Drum Handling System (page 3) accept options for handling:
 - Plastic drum
 - Fiber drum
 - Various sizes of smaller drum

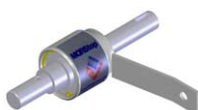
Turn your forklift into a safety conscious drum handler with a Morse Forklift-Karrier. Lift, move and control pouring of a heavy drum right from the seat of your forklift. Forklift-Karriers mount quickly and easily onto the forks, requiring no power connections or modifications to your truck.

You may attach a Drum Cone, faucet or valve to control dispensing.

Models with spark resistant parts are available. Stainless steel models are made on a custom basis.

We highly recommend the **MORStop Tilt-Brake™** Option factory installed on each 800 Lb. and 1500 Lb. capacity Forklift-Karrier with manual tilt. It automatically holds the drum tilt angle, even when contents shift.

Model #	Capacity	Description
Forklift-Karriers with MORCINCH™ Drum Handling System		
285A	800 Lb.	Standard duty Forklift-Karrier
285AM	800 Lb.	Standard duty Forklift-Karrier with spark resistant parts
285A-HD	1500 Lb.	Heavy-duty Forklift-Karrier
285AM-HD	1500 Lb.	Heavy-duty Forklift-Karrier with spark resistant parts
Forklift-Karrier with Two Web Straps for 55-Gallon Steel Drum		
285A-GR	2000 Lb.	Extra Heavy-Duty Forklift-Karrier
Forklift-Karriers with 3-Piece Drum Holder for 55-Gallon Steel Drum		
285G	800 Lb.	Standard duty Forklift-Karrier with 3-piece drum holder
285G-HD	1500 Lb.	Heavy-duty Forklift-Karrier with 3-piece drum holder
285XGR	2500 Lb.	Super-Duty Forklift-Karrier
285XMGR	2500 Lb.	Super-Duty Forklift-Karrier with spark resistant parts



Install **MORStop Tilt-Brake™** option to automatically prevent unwanted drum tilting

Manual Tilt Control Options

Option #	Description
X01	Hand Crank and MORStop Tilt-Brake™
X02	Hand Crank
X03	Hand Wheel
3900i-P	MORStop Tilt-Brake™ factory installed on new unit
3900-P	MORStop Tilt-Brake™ field install on existing unit

Forklift-Karriers with Battery Power Tilt

Model 285A-BP - 1500 Lb. Capacity

Model 285XBP - 2500 Lb. Capacity

Use a two-button pendant or optional wireless tilt control (shown) to pour a drum with your fork truck. Fully invert your drum in 15 seconds. On board battery and charger are included. No power connection or modification of your truck is required.

Handle: 55-gallon steel drum. Model 285A-BP accepts **MORCINCH™** options (page 3) to handle plastic or fiber drum, or various smaller drums.



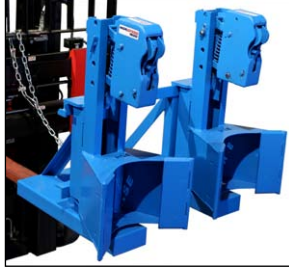
Model #	Capacity	Description
285A-BP	1500 Lb.	Battery powered tilt. 1500 Lb. capacity. Accepts MORCINCH™ options (page 3)
285XBP	2500 Lb.	Battery powered tilt. 2500 Lb. capacity.
4804i-P	- -	Wireless Control Option factory installed

MORSPEEDTM 1500

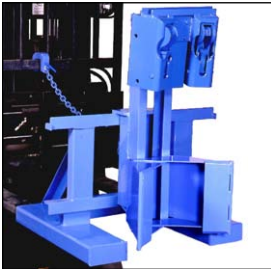
Capacity: 1500 Lb. (680 kg) per drum



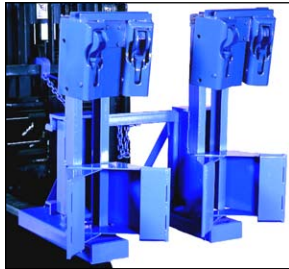
Model 288-1 is designed to handle 1 drum.



Model 288-2 is designed to handle 1 or 2 drums.



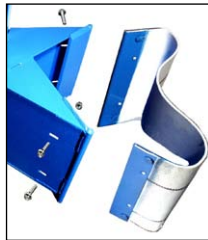
Model 288-1-2H has 2 heads to handle 1 drum.



Model 288-2-2H handle 1 or 2 drums at a time with two heads per drum.



Wide **MORSPEEDTM** jaws are contoured to securely grasp virtually any rimmed drum. The enclosed mechanism provides precise, reliable, automatic drum gripping. Two heads per drum versions reduce stress on the drum by distributing the weight between two sets of jaws.



Optional Belt Kit

Move More Drums with **MORSPEEDTM**

- Lift and move drums with your forklift
- Mounts on forks in seconds with no tools
- No power connections
- Simply raise forks to grip drum
- Steel jaws grip upper rim of steel, plastic or fiber drum

Load drums onto trucks or pallets. Even handle damaged or straight walled drums. Will handle any diameter drum.

VIDEOonline

MORSPEED 1500TM requires 75 Lb. (34 kg) per drum to actuate jaws. Models with two heads per drum require at least 350 Lb. (159 kg).



Optional Belt Kit part # 2523-P for **MORSPEED 1500TM** puts a fabric surface in front of steel backrest to protect the finish on your drum. Order one Belt Kit per drum position.

MORSPEEDTM 1000

Capacity: 1000 Lb. (454 kg)



Handle a rimmed plastic, steel or fiber drum with lid on and secure



Model 286-1 single drum handler
Model 286M-1 adds spark resistant parts

VIDEOonline

The **MORSPEED 1000TM** Forklift Attachment allows you to lift and move a 1000 Lb. (454 kg) drum without leaving your fork truck. Raise the forks to grab drum, and lower to floor or pallet to release. The steel jaws are contoured to securely grasp the drum rim. Jaw mechanism is mechanical and automatic.

MORSPEED 1000TM requires 50 Lb. (23 kg) per drum

All **MORSPEEDTM** Forklift Attachments

- Require minimum drum height of 15" (38 cm)
- Require 16.5" (41.9 cm) between the forks
- Each fork pocket opening is 6.5" wide x 2.5" tall (16.5 x 6.35 cm)

MORStakTM Forklift Mounted Drum Rackers

A safety conscious way to rack drums with your forklift. Lift a rimmed 55-gallon steel or plastic drum weighing up to 800 Lb. Rack drums side by side with virtually zero clearance between drums. Handle a drum with faucet in place to use rack as a dispensing station.

The forklift operator controls drum tilt with a pendant, or optional wireless control. Self-contained battery powered tilt. Manually engage positive drum grip mechanism to lift an upright drum or tilt a drum from horizontal. MORStakTM drum rackers do not allow drum tilting without the grip engaged.



VIDEOonline



Model 289F

Model #	Description
289F	Fork mounted drum racker
289C	Carriage mounted drum racker
4804i-P	Wireless Tilt Control Option factory installed



Model 185A Kontrol-Karrier

Has 800 Lb. capacity. You control drum tilt with 30:1 ratio gear and sprocket drive. **MORCINCH™** Drum Handling System with options for handling plastic drum, fiber drum or various smaller drums.

Lift, move and control pouring of your heavy drum with a Morse Kontrol-Karrier attached to your hoist or crane.

We recommend **MORStop Tilt-Brake™** option on each 800 Lb. and 1500 Lb. capacity Kontrol-Karrier, to add automatic hold of the drum tilt angle.

Models with spark resistant parts available. Stainless steel models also available.

Model 185A-HD Heavy-Duty Kontrol-Karrier

Handle drum up to 1500 Lb. Provides finer tilt control with 60:1 ratio gear and sprocket drive. Features **MORCINCH™** Drum Handling System.



Model 185A-GR Extra Heavy-Duty Kontrol-Karrier

Provides 2000 Lb. capacity with an enclosed worm gear speed reducer for drum tilt control with 60:1 ratio. It has two web straps to secure the drum in the holder.



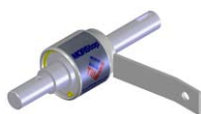
Model 185XGR Super-Duty Kontrol-Karrier

Handle extremely heavy drum up to 2500 Lb. Designed with a heavily reinforced 3-piece drum holder, and an enclosed worm gear speed reducer with 150:1 ratio for drum tilt control.



- Lift, move, and pour a drum with your hoist or crane
- Rotate drum 360° in either direction
- Models with **MORCINCH™** Drum Handling System (page 3) accept options for handling a plastic drum, fiber drum, and various sizes of smaller drum
- Every Morse Below-Hook Drum Handler is load tested at the factory as per American National Standard ASME B30.20 and a load test certificate is shipped enclosed with each unit.

Model #	Capacity	Description
Kontrol-Karriers with MORCINCH™ Drum Handling System		
185A	800 Lb.	Standard duty Kontrol-Karrier
185AM	800 Lb.	Standard duty Kontrol-Karrier with spark resistant parts
185A-HD	1500 Lb.	Heavy-duty Kontrol-Karrier
185AM-HD	1500 Lb.	Heavy-duty Kontrol-Karrier with spark resistant parts
185A-HDSS	1500 Lb.	Stainless steel heavy-duty Kontrol-Karrier
Kontrol-Karrier with Two Web Straps. For 55-Gallon Steel Drum only.		
185A-GR	2000 Lb.	Extra Heavy-Duty Kontrol-Karrier
Kontrol-Karriers with 3-Piece Drum Holder. For 55-Gallon Steel Drum only.		
185G	800 Lb.	Standard duty Kontrol-Karrier with 3-piece drum holder
185G-HD	1500 Lb.	Heavy-duty Kontrol-Karrier with 3-piece drum holder
185XGR	2500 Lb.	Super-Duty Kontrol-Karrier
185XMGR	2500 Lb.	Super-Duty Kontrol-Karrier with spark resistant parts



Install **MORStop Tilt-Brake™** option to automatically prevent unwanted drum tilting

Manual Tilt Control Options

Option #	Description
X01	Hand Crank and MORStop Tilt-Brake™
X02	Hand Crank
X03	Hand Wheel
3900i-P	MORStop Tilt-Brake™ factory installed on new unit
3900-P	MORStop Tilt-Brake™ field install on existing unit

Power-Tilt Kontrol-Karriers

Provide the ease of powered drum rotation 360° in either direction. Fully invert your drum in 15 seconds with an AC 2-button pendant (shown) or a hand-held control valve on air powered models. Handle 55-gallon steel drum up to 1500 Lb. Accepts Bracket Assembly for a plastic or fiber drum, and Diameter Adaptors for smaller drums.

Model #	Description
195A-1-115	AC power-tilt, 1-phase/115V motor
195A-3-230	AC power-tilt, 3-phase/230V motor
195A-3-460	AC power-tilt, 3-phase/460V motor
195A-A	Air motor power-tilt
195GM-A	Air motor power-tilt, spark resistant parts



Model 195A-1-115

Drum Karriers to lift, move and pour a drum within your reach below a hook on a hoist or crane. You manually control the tilt angle of the drum. Use the built-in tilt lock to hold the drum vertical for transporting, or in horizontal position to pour. Capacity: 800 Lb.



Model #	Description
85i	For 55-gallon steel drum, accepts adaptors
85A	For 55-gallon steel drum
85AM	Spark resistant parts, for 55-gallon steel drum
85i-SS	Stainless steel for 55-gal. steel, accepts adaptors
85C	For fiber or steel drum, 21" to 23" diameter
85-5	For 5-gallon pail

Every Morse Below-Hook Drum Lifter is load tested at the factory as per American National Standard ASME B30.20 and a load test certificate is shipped enclosed with each unit.

Below-Hook Drum Lifters

These drum lifters automatically grip below the rim of your closed steel, fiber or plastic drum.

Handle:

- 18" to 26" diameter (I.D.) rimmed drum
- 30 to 55-gallon drum
- 85-gallon steel salvage or overpack (NOT for lifting plastic overpacks)

Capacity: 1000 Lb.



Model #	Description
92	Drum Lifter for rimmed 18" to 26" diameter
92M	Spark Resistant Drum Lifter for rimmed 18" to 26" diameter
92-SS	Stainless Steel Drum Lifter for rimmed 18" to 26" diameter
92-30	Drum Lifter for rimmed 15" to 23" diameter
92-5	Drum Lifter for rimmed 5-gallon pail 11" to 15" diameter

Lifter for Drum and Overpack

Model 91 has simple tong design with broad grippers, providing fast overpacking. Its narrow profile allows complete lowering into an overpack drum.

Handle: 55-gallon steel drum into overpack or 85-gallon steel overpack.



Heavy-Duty Drum Lifters

Lift and move your heaviest drum with this below-hook lifter. Upend or downend a drum using off-vertical mode.

Models 42 and 42-G have alloy chain, links and lifting rings with heavy-duty steel rod and welded eyes. Forged steel hooks engage drum rims. Model 42-G has hot dipped galvanized finish.

Handle: 55 or 85-gallon steel drum.

Capacity: 2000 Lb.



Fork Mount Hook

Model 284 allows you to use your forklift like a hoist. Slide this hook onto one fork of your truck and tighten the T-screw to use a below-hook drum lifter. Fork opening is 5.5" x 1.56"

Capacity: 2000 Lb.



Verti-Karriers

Grab, lift, move and place your drum. Verti-Karriers grip the drum automatically, then release it only when the drum is set down. This saves time for your operators and discourages dangerous climbing.

Handle: Rimmed 55-gallon steel drum.

Capacity: 1000 Lb.



Model #	Description
90	Verti-Karrier for 55-gallon steel drum
90M	Spark Resistant Verti-Karrier for 55-gallon steel drum
90-SS	Stainless Steel Verti-Karrier for 55-gallon steel drum
90-30	Verti-Karrier for 30-gallon steel drum
90-85	Verti-Karrier for 85-gallon steel salvage drum

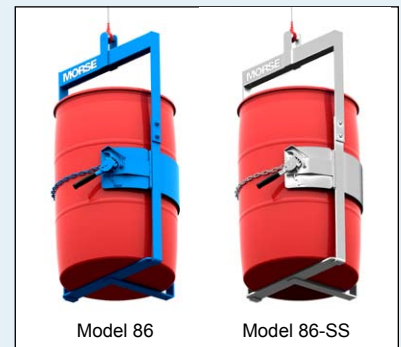
Drum Lifter Models 86 and 86-SS

Use to lift and transport an upright drum with your hoist or crane. Holds securely around your drum and has bottom support bar.

Handle: Steel, plastic or fiber drum 22" to 23.5" in diameter, and 23" to 38" high.

Model 86 is carbon steel painted blue. Model 86-SS is type 304 stainless steel.

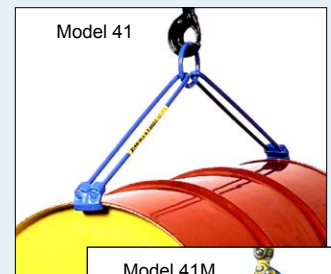
Capacity: 1000 Lb.



Drum Lifting Hook

Use model 41 drum lifter with your hoist, crane or fork mounted hook to lift and move a heavy drum. Has an alloy steel lifting ring, steel rods and malleable iron hooks. Handle: 55-gallon steel drum 34" to 36" long.

Capacity: 1000 Lb.



Model 41M

Spark-Resistant Drum Lifting Hook

Model 41M is like model 41, but lifting ring and hooks are spark resistant aluminum/bronze alloy, and rods are stainless steel. Handle: 55-gallon steel drum 34" to 36" long.

Capacity: 1000 Lb.



IMPORTANT: Install all Morse Drum Rollers and Drum Tumblers in accordance with OSHA requirements for enclosure and safety interlock, etc. One way to accomplish this, is a Morse Guard Enclosure with safety interlock to automatically shut off the drum rotator when the gate is opened.

Morse Drum Rotators Save Time, Labor and Money!

- **Mix the contents of a sealed drum**
- **Remix settled ingredients without inserting anything into your drum**
- **Save the labor of transferring contents and clean-up**
- **Improve safety: Eliminate spills, contamination, and exposure to contents**

Tilt-To-Load Drum Tumblers

VIDEOonline

- Load your upright drum at floor level
- Power-lift drum to rotate position
- Vigorous "corner-over-corner" mixing
- Tumble steel, plastic or fiber drum at 5 to 20 RPM
- Choose air powered or AC model
- Capacity: 800 Lb. (363 kg) Full Drum
400 Lb. (181 kg) Half-Full Drum



Morse Tilt-To-Load Drum Rotators thoroughly mix the contents of your closed drum with vigorous "corner-over-corner" tumbling. Load upright drum at floor level, and secure it in the holder. Then use one handle to lift the drum, and a second handle to control drum rotation.



Tilt-To-Load Drum Tumbler shown with Controls, and Guard Enclosure with Safety Interlock to meet OSHA requirements



Load drum at floor level with drum truck or crane



Secure drum with web strap and two top clamps



Raise drum with power tilt control



VIDEOonline

- Load with crane or hoist
- Thorough "corner-over-corner" mixing
- Tumble steel, plastic or fiber drum at 14 RPM
- Capacity: 800 Lb. (363 kg) Full Drum
400 Lb. (181 kg) Half-Full Drum



Load with hoist or crane



Secure drum with web strap and 2 top clamps

Tilt-To-Load Drum Tumblers with Automated Control Package and Safety Enclosure

VIDEOonline



The Automated Control Package automatically lifts your drum, rotates it for the time you set, then returns it to upright position at floor-level for easy handling. Includes Tilt-To-Load Drum Tumbler, Automated Control Package, and Enclosure with Safety Interlock to meet OSHA requirements.



Drum Tumbler™ shown with Controls, and Enclosure with Safety Interlock to meet OSHA requirements

Model #	Description
311-3-230	Tilt-To-Load Drum Tumbler with Automated Control Package, and Enclosure with Safety Interlock

Hydra-Lift Drum Rollers

[VIDEOonline](#)

- Load your upright drum at floor level
- Power-lift drum to rolling position
- Roll a closed drum on its side to mix the contents
- Capacity: 1,000 Lb. liquid load, 400 Lb. dry load.



Load with drum truck, hoist or crane

Power tilt to rolling position

Enjoy the benefits of easy, ergonomic loading and unloading and eliminate the hazards of manual drum handling. Hydra-Lift Drum Rollers accept an upright drum at floor level. Then you control the built-in hydraulic system to lift and place it quickly and easily for rotation. Start and stop rotation with a second control.

Roll a 55-gallon drum at 5 to 20 RPM until contents are mixed as desired, then return the drum to vertical to unload. Models available with AC or air power. 50Hz models have 20% reduction in drum RPM.

Option # POLY-456

to roll plastic drum. Extra wheels support flexible sidewall, and end stop prevents plastic drum from travelling lengthways.

Option # 1-5-1

Idler Attachment to roll 1 to 5 gallon pail.

OSHA requires

that all drum rotators be enclosed with a safety interlock to automatically shut off the machine when the enclosure is opened.



Hydra-Lift Drum Roller shown with Controls, and Guard Enclosure with Safety Interlock to meet OSHA requirements

Stationary Drum Rollers

[VIDEOonline](#)



Single Rollers for 1 drum

Double Rollers for 1 or 2 drums

Place drum onto roller with model 41 or 42 drum lifter

Roll drum on its side to mix the contents. Choose factory set drum speed of 20 or variable speed models.

Capacity:

Liquid load: 1,000 Lb. per drum.
Dry load varies: 300 Lb. at 20 RPM

Order Guard Enclosure Kit with Safety Interlock to meet OSHA requirements

Option # POLY-1-5154 Roll plastic drum on single drum roller

Option # POLY-2-5154 Roll plastic drums on double drum rollers

Part # 1-5-1 Idler Attachment to roll a 1 to 5 gallon pail. Easily removed for rolling a drum.



Guard Enclosure with safety interlock (Drum Roller sold separately)

Portable Drum Rollers

[VIDEOonline](#)

Roll your closed drum on its side to agitate the contents with this compact, portable industrial drum mixer. Bring important ingredients back into suspension. Eliminate worker exposure and reduce clean-up. This Portable Drum Roller can be used as a drain stand to dispense from a drum.

Roll a 6" to 28" diameter steel drum up to 40" long. Air powered and AC models.

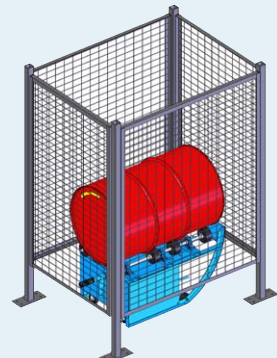
Capacity:

Liquid load: 500 Lb.
Dry load varies: 300 Lb. at 20 RPM.
50Hz models have 20% reduction in drum RPM.

Order Guard Enclosure Kit with Safety Interlock to meet OSHA requirements

Option # POLY-201 Roll plastic drum on Portable Drum Roller

Option # 1-5P Idler Attachment to roll 1 to 5 gallon pail. Remove to roll 55-gallon drum.



Guard Enclosure with safety interlock (Drum Roller sold separately)

Example Model #	Description
1-5154/20-1	Single Roller, 20 RPM, 1-phase 115V motor
GEK-1-5154-1	Guard Enclosure Kit for Single 1-phase AC Drum Rollers
POLY-1-5154	Option: Roll a plastic drum on Stationary Drum Roller
1-5-1	Idler Attachment to roll 1 to 5 gallon can on Drum Roller

Example Model #	Description
201VS-1	Portable Roller, Variable Speed, 1-phase 115V TEFC motor
POLY-201	Option: Roll a plastic drum on Portable Drum Roller
1-5P	Idler Attachment to roll 1 to 5 gallon can on Drum Roller
GEK-201-1	Guard Enclosure Kit for 1-phase AC Portable Drum Rollers

Quickly move and rack your heavy drums up to 102" high

Rack drums with virtually no space between them

Capacity: 800 Lb.



1. Manually secure clamp to grip drum

MORStak™ drum rackers move in tight spaces where your forklift won't fit... the turning radius is only 6 feet. Rack drums with virtually no space between them. Lift an upright drum, tilt it to horizontal, and place it into a drum rack. Handle steel or plastic rimmed 55-gallon drum. Choose electric, battery or air powered lift and tilt function.



2. Raise drum



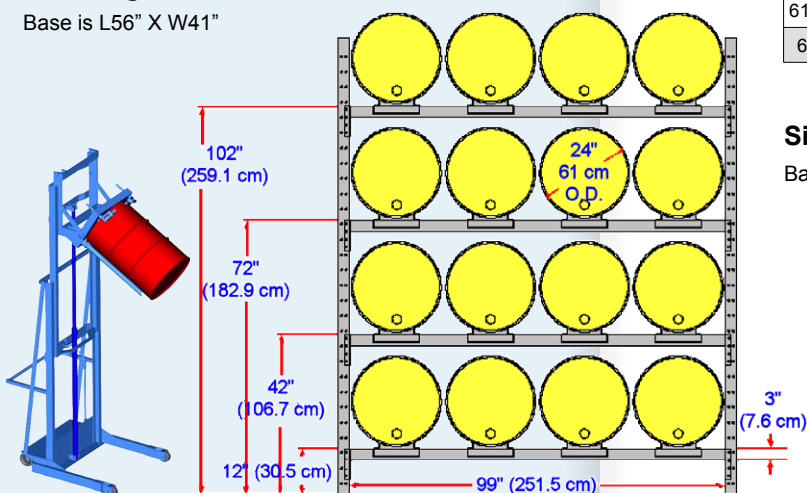
3. Tilt drum to horizontal and transport to racking location



4. Manually release clamp, then raise drum to place in rack

Two-Stage Series rack drum up to 102" high.

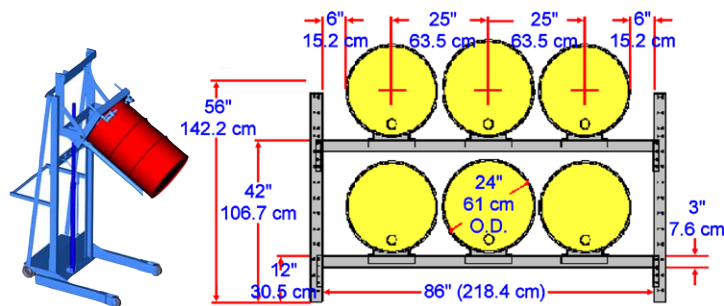
Base is L56" X W41"



Model #	Description
620-115	MORStak™ Drum Racker, 102", Battery Power Lift & Tilt
620-114	MORStak™ Drum Racker, 102", Air Power Lift & Tilt
620M-114	MORStak™ Drum Racker, 102", Spark Resistant Parts, Air Power Lift & Tilt
620-110	MORStak™ Drum Racker, 102", AC Power Lift & Tilt
611-115	MORStak™ Drum Racker, 56", Battery Power Lift & Tilt
611-114	MORStak™ Drum Racker, 56", Air Power Lift & Tilt
611M-114	MORStak™ Drum Racker, 56", Spark Resistant Parts, Air Power Lift & Tilt
611-110	MORStak™ Drum Racker, 56", AC Power Lift & Tilt

Single-Stage Series rack drum up to 56" high.

Base is L49" x W36"



Omni-Lift™ Drum Rackers

Rack 55-gallon drum up to 72" high

Capacity: 800 Lb.



Easily lift, tilt and rack a 55-gallon steel drum up to 6 feet high with Omni-Lift™ Drum Rackers. Powered models provide quicker and more ergonomic drum racking. Choose battery, AC or air powered lift and tilt function.

Add **Option AP405** to handle a rimmed 55-gallon plastic drum.

Models with spark resistant parts are also available.

Lift drum from vertical or horizontal position on the floor, and place it down in either position.



Load drum onto Stationary Drum Roller

Model #	Description
405	Omni-Lift™ Drum Racker, Manual Lift and Tilt
405-115	Omni-Lift™ Drum Racker, Battery Power Lift and Tilt
405-125	Omni-Lift™ Drum Racker, Battery Power Lift, Manual Tilt
405-114	Omni-Lift™ Drum Racker, Air Power Lift and Tilt
405M-114	Omni-Lift™ Drum Racker, Spark Resistant Parts, Air Power Lift and Tilt
405-124	Omni-Lift™ Drum Racker, Air Power Lift, Manual Tilt
405M-124	Omni-Lift™ Drum Racker, Spark Resistant Parts, Air Power Lift, Manual Tilt
405-110	Omni-Lift™ Drum Racker, AC Power Lift and Tilt
405-120	Omni-Lift™ Drum Racker, AC Power Lift, Manual Tilt
AP405	Adaptor for rimmed 55-gallon plastic drum

Drum Palletizers with Geared Drum Tilt

VIDEOonline

**Hand Crank Geared Tilt
to dispense up to 26" high**

Palletize with V-shaped base

Capacity: 600 Lb.

Control dispensing up to 26" high with hand crank geared tilt. We recommend the MORStop Tilt-Brake Option, which automatically locks the pouring angle until you turn the hand crank. Rotate drum 360° in either direction. Raise upright drum up to 20" above the floor. Move a drum onto and off pallets.



We recommend **Option 3900i-P MORStop Tilt-Brake™**

Option 4560-P Top Rim Clamp for 55-gallon rimmed plastic drum

Option 4556-P Bracket Assembly for rimless plastic drum or fiber drum

Diameter Adaptors for smaller drums



Model #	Description
82A-GT	Geared Tilt Drum Palletizer / Pourer, Manual Lift
82A-GT-120	Geared Tilt Drum Palletizer / Pourer, AC Power Lift
82A-GT-124	Geared Tilt Drum Palletizer / Pourer, Air Power Lift
82A-GT-125	Geared Tilt Drum Palletizer / Pourer, Battery Power Lift
82AM-GT	Geared Tilt Drum Palletizer/Pourer, Manual Lift, Spark Resistant Parts
82AM-GT-124	Geared Tilt Drum Palletizer/Pourer, Air Power Lift, Spark Resistant Pts

Drum Palletizers that Pour

VIDEOonline

Lift upright drum up to 20" high
Move and dispense up to 26" high
Move drum on and off pallets
Capacity: 600 Lb.

Designed to lift and pour a heavy drum up to 26" high, when held in horizontal position. Manually rotate a drum 360° in either direction. Raise upright drum up to 20" above the floor. Lock drum in vertical position to prevent spills while transporting, or lock in horizontal position to dispense. Also move a drum to and from pallets. Handle 55-gallon steel drum.

Option 4560-P Top Rim Clamp for 55-gallon rimmed plastic drum

Option 4556-P Bracket Assembly for fiber drum or rimless plastic drum

Diameter Adaptors for smaller drums



Model #	Description
82A	Drum Palletizer / Pourer, Manual Lift
82A-120	Drum Palletizer / Pourer, AC Power Lift
82A-124	Drum Palletizer / Pourer, Air Power Lift
82A-125	Drum Palletizer / Pourer, Battery Power Lift
82AM	Drum Palletizer / Pourer, Manual Lift, Spark Resistant Parts
82AM-124	Drum Palletizer / Pourer, Air Power Lift, Spark Resistant Parts

Model 81 Drum Spotter

VIDEOonline

Easily move drum on and off pallets

Capacity: 800 Lb.

Compact, easy-to-use Drum Spotter makes it simple and quick to move a drum on and off pallets. Raise the handle to engage the upper drum rim, and lower the handle to lift your rimmed drum from a 6" pallet. The balanced Drum Spotter fully supports the drum weight.

Handle rimmed steel, plastic or fiber drum with 22" to 23.5" diameter, and from 34" to 36" tall.



Drum Movers / Palletizers

VIDEOonline

Lift drum up to 19" high

Move drum to and from pallet

Capacity: 1000 Lb.

Simply move the drum palletizer to your drum and raise the head to automatically engage the upper drum rim. It holds the drum in upright position for you to transport. Lower the drum to the floor or onto a pallet, and the jaws automatically release when the drum is resting.

Raise a drum up to 19" above the floor. Handle rimmed steel, plastic or fiber drum with minimum height of 22.5". The minimum drum weight required to actuate the jaws is 75 Lb.



Model #	Description
82H	Drum Lifter / Palletizer, Manual Lift
82HM	Drum Lifter / Palletizer, Manual Lift, Spark Resistant Parts
82H-120	Drum Lifter / Palletizer, AC Power Lift
82H-124	Drum Lifter / Palletizer, Air Power Lift
82HM-124	Drum Lifter / Palletizer, Air Power Lift, Spark Resistant Parts
82H-125	Drum Lifter / Palletizer, Battery Power Lift

Mobile-Karriers

Raise, move and pour drum

Capacity: 800 Lb.

Mobile-Karriers fully support and balance a drum. Lock the drum in upright position for transporting, or in horizontal position to pour. Rotate a drum by hand 360° in either direction. Pour at up to 17" high.

Some models accept Diameter Adaptors for smaller drum.



Model #	Description
80A	For 55-Gallon Steel Drum
80i	For 55-Gallon Steel Drum. Accepts Diameter Adaptors.
80AM	For 55-Gallon Steel Drum. Has Spark Resistant Parts.
80i-SS	For 55-Gallon Steel Drum. Stainless Steel. Accepts Adaptors.
80APS	For 55-Gallon Plastic or Steel Drum. Includes Anti-Slip Strips.

DRUM PALLETIZERS

MOBILE-KARRIERS

4-Wheel Drum Trucks **VIDEOonline**

Move and dispense your drum with ease
Move drum on and off pallets

Capacity: 1,000 Lb.

Morse 4-Wheel Drum Trucks make it easy to move a heavy drum. They are simple to load, maneuver and carry the full weight of a drum on four wheels. Once loaded, the truck fully supports and balances the drum, so you don't have to. Move a drum on and off pallets. Use to dispense drum into 5-gallon pail. When you're done using the truck, it stands upright for storage.

Handle rimmed 30, 55 or 85 gallon steel drum, 14" to 28" diameter and 30" to 41" tall.

Option # 5058-P Strap Kit enables you to pull a rimless plastic drum onto drum truck.



Model 160



Option 5058-P



Model 160-SS



Model 160-WP

Model #	Description
160	4-Wheel Drum Truck
160-SS	4-Wheel Drum Truck, T304 Stainless Steel
160-WP	4-Wheel Drum Truck, 10" pneumatic wheels
160-WP-SS	4-Wheel Drum Truck, 10" pneumatic wheels, T304SS
160M	4-Wheel Drum Truck with spark resistant parts
5058-P	Option: Strap Kit for rimless drum

2 & 3 Wheel Drum Trucks

Models 152 and 153 Drum Trucks

Easy to use, inexpensive drum trucks. Trim, all steel welded construction. Handle 30, 55 or 85 gallon drum. Model 152 has 10" rubber wheels. Model 153 has 10" polyolefin wheels. Capacity: 1,000 Lb.



Model 155 Handstand Drum truck

Stands upright for convenient, space saving storage. Has a support to stand the drum truck upright. This doubles as a footrest to assist you in loading your drum. Handle 30, 55 or 85 gallon drum. Capacity: 1,000 Lb.



Model 125 "No Spill" Drum Truck

Transport your drum in upright position. Provides excellent stable control of upright drum with a handle attached to the base, two 8" polyolefin wheels, and a 4" swivel caster. Handle 55-gallon steel, plastic or fiber drum up to 24" in diameter. Capacity: 1,200 Lb.



Model #	Description
125	"No Spill" Drum Truck
152	2-Wheel Drum Truck, 10" rubber wheels
153	2-Wheel Drum Truck, 10" polyolefin wheels
155	2-Wheel Handstand Drum Truck, 10" polyolefin wheels

Patented **Clamp+GO™** Dolly Handle

Model 24

VIDEOonline

Clamp+GO!

Increase worker safety and efficiency by moving drum dollies with the **Clamp+GO™** Dolly Handle. Attach to the sidewall of your drum dolly with a downward push to engage the quick-coupling mechanism. Easily disengage from one dolly, and quickly connect to another. Use the **Clamp+GO™** with various sizes of round drum dollies.



Round Drum Dollies - Capacity: 1000 Lb.

Easily move a drum on four 3" MORTuf polyolefin swivel casters and wide stance base. Handle up to 23" O.D.



Model 14-SS

Square Drum Dollies - Capacity: 1000 Lb.

Dolly with flat deck and rounded corners turned up to hold the drum in position. Four 3" MORTuf polyolefin swivel casters on wide base. Handle up to 24" O.D.



Model 34

Option # 4959I-P: Stainless steel casters with polypropylene wheels on any Morse drum dolly.

Model #	Drum Dolly Description
14	Round 55-gallon, steel casters, polyolefin wheels
14M	Round 55-gallon, spark resistant, steel casters, polyolefin wheels
14-SS	Round 55-gallon, stainless steel, steel casters, polyolefin wheels
14-SSC	Round 55-gallon, stainless steel, stainless steel casters, polypropylene wheels
14-30	Round 30-gallon, steel casters, polyolefin wheels
14-30SS	Round 30-gallon, stainless steel, steel casters, polyolefin wheels
34	Square 55-gallon, steel casters, polyolefin wheels
34-30	Square 30-gallon, steel casters, polyolefin wheels
34-5	Square 5-gallon, steel casters, polyolefin wheels

Drum Cradle Trucks

Model 36 Cradle Truck Easy to load 55-gallon drum cradle with built-in retractable tipping lever. Capacity: 500 Lb.

Model 36-SS made of type 304 stainless steel.



Model 40 and Model 31

Model 40 Cradle Truck designed with rugged angle iron construction. Use with Model 31 Tipping Lever to assist in loading a heavy drum onto Cradle Truck. Model 31 Tipping Lever is 40" steel tubing with rim hook. Capacity: 700 Lb.

Model 40-30 like Model 40, but sized for a 30-gallon drum.

Model 46 Cradle Truck for 15-gallon steel drum. Rock-over loading and four 3" polyolefin wheels. Capacity: 500 Lb.



Model 46

Model 32 Drum Uprender provides leverage to upright a horizontal steel drum.



Model 32

PailPRO[™] Series[™]

5-Gallon Pail Handlers

Ergonomic, safety conscious pail handling equipment

- Increase productivity
- Help prevent repetitive motion injuries

PailPRO[™] 5-Gallon Can Tumblers [VIDEOonline](#)



Single Can Tumblers



Double Can Tumblers
tumble one or two cans at a time.

Thorough "corner-over-corner" mixing action of dry or liquid loads right inside a sealed can. Tumble parts with media to deburr or polish. Rotates cans at 23 RPM continuously in one direction. It does NOT shake or oscillate cans.

Rotate pail or can 4.5" to 16.5" tall and up to 12.5" in diameter.

Single phase/115V models have timer for 0 to 60 minutes. AC Motor is 1/4 HP, 60 Hz. Models with explosion-proof motor or air motor available for hazardous areas.

Capacity: 100 Lb. per can.

Note: OSHA requires ALL rotators are enclosed with safety interlock, so it cannot revolve unless guard is in place.



Guard Enclosure GEK-2-305-1
(Can Tumbler sold separately)

Example Can Tumblers and Enclosure Kits

Model #	Description
1-305-1	Single Can Tumbler with timer, 1-phase 115V TEFC
GEK-1-305-1	Guard Enclosure Kit with Safety Interlock for Model 1-305-1 (Can Tumbler sold separately)
2-305-1	Double Can Tumbler with timer, 1-phase 115V TEFC
GEK-2-305-1	Guard Enclosure Kit with Safety Interlock for Model 2-305-1 (Can Tumbler sold separately)

PailPRO[™] Below-Hook Can Tipper

Ergonomic model 85-5 pail handler to lift and pour your 5-gallon plastic or metal pail, 11" to 12" in diameter.

Capacity: 200 Lb.



PailPRO[™] Below-Hook Pail Lifter

Model 92-5 is sized for your 5-gallon pail with 11" to 15" diameter.

Capacity: 1,000 Lb.



PailPRO[™] 5-Gallon Pail Dollies



Place your pail onto a dolly to move it around on four 3" swivel casters. Helps employees safely move pails around and reduce repetitive lifting. Pail dollies have a flat deck design with four rounded corners turned up to hold a pail in position.

Capacity: 200 Lb.

Model 34-5 has steel construction.

Model 34-5 hamade of type 304 stainless steel.

Model 83 PailPRO[™] 5-Gallon Pail Handler

- Lift, tilt and pour a 5-gallon pail with ease
- Dispense at up to 5 feet high

Use Morse model 83 to lift and pour a 5-gallon pail weighing up to 150 Lb. It is easy to maneuver, and compact enough to move through standard doorways. The hand wheel used to turn the pail is equipped with the **MORStop Tilt-Brake[™]** which automatically locks the tilt position until you move it again. Use the parking brake to prevent the unit from moving while you pour. Moving parts of this safety oriented design are enclosed to avoid pinch points.

Handle 11" to 12" diameter pail.

Base Dimensions: L33" x W32". Overall height: 80".

Optional Counter Weight Kit part # 3930-P (not shown) allows the base to be reversed to enable pouring beyond the front wheels. The capacity with this option installed is reduced to 75 Lb.



[VIDEOonline](#)

PailPRO[™] 5-Gallon Pail Heaters

Heat your metal or plastic 5-gallon pail. The flexible heater band conforms to the curvature of the pail to heat the contents. Fits 11.25" +/- 1" diameter pail.



Model #	Heater Description	Thermostat
710-5-115	5-Gallon metal pail, 115V 550W, 4" wide band	50° to 425° F
710-5-230	5-Gallon metal pail, 230V 550W, 4" wide band	50° to 425° F
711-5-115	5-Gallon plastic pail, 115V 150W, 4" wide band	50° to 160° F
711-5-230	5-Gallon plastic pail, 230V 150W, 4" wide band	50° to 160° F

Model 152-5 PailPRO[™] 5-Gallon Pail Truck

Ergonomic 2-wheel truck eases handling a heavy 5-gallon pail or can. Simply place the pail handle over the hook and pull back on the truck handle to lift the pail. It rolls easily on two 8" diameter MORTUF hard polyolefin wheels. When you're done, the pail truck stands upright by itself.

Capacity: 150 Lb.



PailPRO[™] Can Tipper ideal for dispensing 5-gallon pails

These can tipper are ideal for dispensing small quantities from a 5-gallon can or pail. A safety lock holds pail in place. Dispensing height is 10". Fold for storage. Capacity: 75 Lb. per can.

Model 15 handles a single pail. Model 2-15 handles two pails. Model 15-SS is made of type 304 Stainless Steel and handles a single pail.



Model 15-SS



Model 2-15



The Specialist In Drum Handling Equipment

Morse Manufacturing Company, Inc.
727 West Manlius Street
East Syracuse, NY 13057-0518

Phone: (315) 437-8475

Fax: (315) 437-1029

Email: info@morsedrum.com

Website: morsedrum.com



Drum Hand Pumps

Drum Pumps to dispense liquids



The self priming piston pumps on the forward and back strokes to yield a gallon in fewer than five cycles. Use for liquids at temperatures up to 80° F (25 C) and maximum viscosity of 2,000 SSU (e.g. 30W motor oil). Each pump is compatible with specific chemicals. Check Morse website for chemical compatibility of each liquid by chemical name. It is the user's responsibility to take appropriate safety and protective measures with hazardous chemicals.

Chemical Compatibility

Model #	Compatible Liquids (General Guide)
26	Petroleum products, lube oils
27-1AE	Methyl alcohol, ethyl alcohol
27-4AV	Some naphthas, some aromatics
28-5BV	Some chlorinated solvents, acids, aromatics, xylene
28-6BE	Some acids, caustics, ketones, acetates

Drum and Pail Heaters **VIDEO**online

Drum heaters provide a simple, effective and reliable way to heat the contents of your drums. There are Drum Heaters sized for a 5-gallon pail, 30-gallon or 55-gallon drum, whether plastic, steel or fiber. Position the 4" wide band BELOW the content level in the drum. It conforms to the drum curvature to conduct heat to the product inside. Adjust the thermostat to automatically maintain the correct temperature. Two drum heaters may be used on a drum for faster warming.



- Heaters for metal drum have 50° to 425° F (10° to 218° C) thermostat
- Plastic or fiber drum heaters have 50° to 160° F (10° to 71° C) thermostat

Model #	Heater Description	Fits Diameter
710-55-115	55-Gallon steel drum, 115V 1500W	22.5" +/- 1"
710-55-230	55-Gallon steel drum, 230V 1500W	22.5" +/- 1"
710-30-115	30-Gallon steel drum, 115V 1000W	18.25" +/- 1"
710-30-230	30-Gallon steel drum, 230V 1000W	18.25" +/- 1"
710-5-115	5-Gallon metal pail, 115V 550W	11.25" +/- 1"
710-5-230	5-Gallon metal pail, 230V 550W	11.25" +/- 1"
711-55-115	55-Gallon plastic or fiber drum, 115V 300W	22.5" +/- 1"
711-55-230	55-Gallon plastic or fiber drum, 230V 300W	22.5" +/- 1"
711-5-115	5-Gallon plastic pail, 115V 150W	11.25" +/- 1"
711-5-230	5-Gallon plastic pail, 230V 150W	11.25" +/- 1"

Use to melt, preheat, prevent freezing, control viscosity, or promote flow and dissolution. Each drum heater is equipped with cord. 115V heaters also include a plug.

Not for use with flammables or in explosion hazard areas.

Drum Faucets



Model 65-20

Model 65-20 Molasses Gate Faucet for viscous liquids made of grey iron with brass sliding plate closure. Fits metal drum 2" pipe thread. **Model 65-75** like model 65-20, but for 3/4" bung of metal drum.

Model 68-20 Polyethylene Faucet for use with nonflammable, corrosive liquids. Has a fast half-turn on/off handle that stays open until you close it. Use to control dispensing of viscous liquids through the 2" bung of your metal drum.

Model 68-75 is like model 68-20 above, but sized for 3/4" bung thread. Use for more fluid liquids.



Models 68-20 and 68-75

Model #	Description
65-20	Molasses Gate Faucet for 2" pipe thread
65-75	Molasses Gate Faucet for 3/4" pipe thread
68-20	2" Polyethylene Faucet
68-75	3/4" Polyethylene Faucet

MORplug™ Drum Wrenches

Fit virtually any steel, plastic or fiber drum

MORplug™ drum wrenches have numerous surfaces and shapes to fit virtually all drum plugs on your steel, plastic or fiber drums. The generous size provides extra leverage and hand clearance.

Model 59 for drums of nonflammable materials.

Model 59SRM made of spark resistant manganese bronze, a precaution for drums of flammable material.

Model 59SRZ is an economical wrench made of spark resistant, high-strength zinc aluminum alloy.



Your Morse Dealer is:

S&G Enterprises, Inc.
800-233-3721 / 262-251-8300
www.RamFlat.com/Morse