

1923 - 2023

MORSE

100TH

ANNIVERSARY



S&G ENTERPRISES INC. * 262-251-8300

<https://www.ramflat.com/morse/>
Morse@RamFlat.com

Phone: (315) 437-8475 | Email: info@morsedrum.com | Website: morsedrum.com

Celebrating 100 YEARS!



For 100 years, since 1923, Morse Manufacturing has been dedicated to giving you more - and in today's world of increased domestic and international competition, you should expect more.

What can you expect from Morse Manufacturing?

- **Customer Service:** Expect personal attention from one of our customer service representatives. Visit the Company Directory on our web site, give us a call and let us get to know you personally.
- **Dealer Support:** We value your time and your knowledge! You can expect assistance with any drum-handling question when you contact us.
- **Product Support:** If you have a technical question, expect to speak with one of our design engineers. We strive to make sure you get the best product to meet your needs.
- **Product Selection:** Morse offers the most extensive line of drum-handling equipment. If you don't see what you need in our standard offering, our custom capabilities will help meet your application requirements.
- **Product Quality:** Every Morse Product design was professionally engineered in-house to exceed industry standards. You see foreign products that look like a Morse? Know with confidence who designed the original! We are so confident in our products, our skilled employees, our certified welders, and our production process that we offer a 2-year warranty against defects.
- **Product Information:** Current and informative product literature and parts diagrams. Visit the literature pages on our website. We labor tirelessly to keep our literature up to date and you informed of any product introductions or changes.
- **History:** With a history of 100 years, you can expect us to provide you with replacement parts or product upgrades when you need them in the future - 5, 10, or 20 years from now. Morse is committed to manufacturing our products in the USA.

Thanks for considering Morse for your drum handling needs. Please feel free to contact us.

Nathan Andrews
President

Phone: (315) 437-8475

Email: info@morsedrum.com

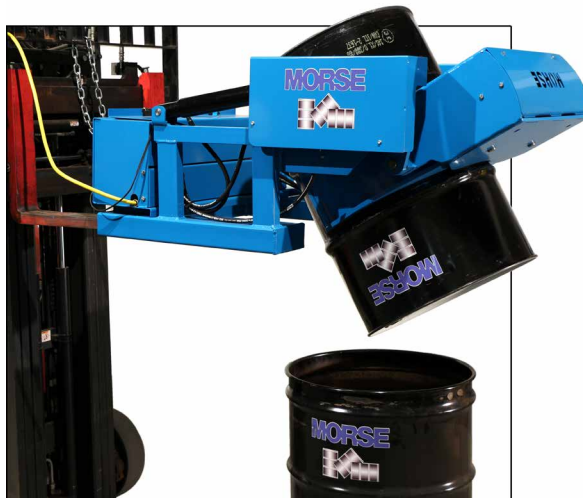


Expanded Morse Factory

103 Kuhn Rd.
Syracuse, NY U.S.A.

Improved Quality - Morse products have a durable powder coat finish. Many models are also available in type 304 stainless steel with bead blast finish for food, pharmaceutical, marine and chemical applications.

Increased Capacity - Moving the entire Morse factory tripled our production space and we have modernized equipment, with more to come.



GRIP+GO™

**Power-Grip
Fork Mount
Drum Handler**

See page 6

310 Series Tilt-To-Load Drum Tumblers

- Easy Floor-Level Drum Loading
- Power-Tilt drum up
- Vigorous drum mixing
- Tumble 30 to 55 gallon (114 to 210L) steel, plastic or fiber drum
- Vary drum rotation from 5 to 20 RPM

See page 10





MORCINCH™

Drum Handling System Handles Many Different Drums

MORCINCH™ Kits

Top Rim Clamp for Rimmed Drum

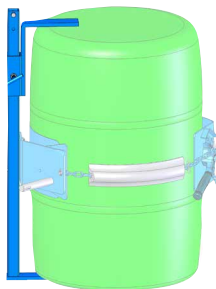


Install **Top Rim Clamp** on **MORCINCH™** drum holder to prevent **RIMMED** 30 to 55 gallon (114 to 210L) plastic or fiber drum from slipping. To safely handle a plastic 55-gallon drum, you **MUST** install either the **Bracket Assembly** or **Top Rim Clamp**



Top Rim Clamp used with Kontrol-Karrier

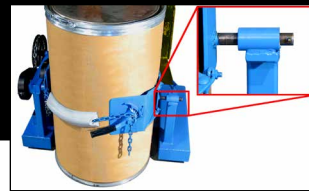
Bracket Assembly for Rimless Drum



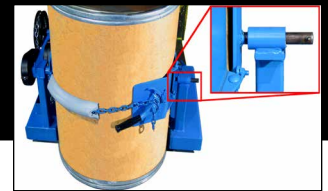
Bracket Assembly is **REQUIRED** to prevent a **RIMLESS** plastic drum from slipping, and recommended to more securely hold a fiber drum. Bolt onto **MORCINCH™** drum holder as brace at top and bottom of drum. Adjusts for drum 31" to 39" (79 to 99 cm) tall.



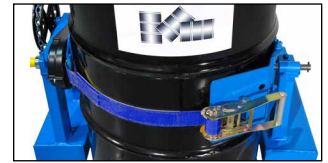
Bracket used with Kontrol-Karrier



MORCINCH™ Drum Holder automatically adjusts for 22" to 23.5" (56 to 59.7 cm) diameter drum

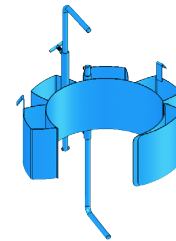


Includes cinch chain with flexible cover. Enhances grip and helps protect drum sidewall...



...or choose Web Strap and Ratchet option

Diameter Adapters for Smaller Drums



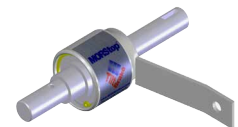
Diameter Adapter for drum smaller than 30-gallon

Diameter Adapter for 30-gallon (114L) or larger drum

Handle multiple drum sizes with single drum handler. Add correct **Diameter Adapter** for each size smaller drum. Adapters simply place into and lift out of **MORCINCH™** drum holder.



MORStop™ Tilt-Brake



MORStop™ Tilt-Brake™ automatically holds drum tilt angle to prevent uncontrolled drum turning, even when contents shift. **Option 3900i-P MORStop™ Tilt-Brake™** factory installed on **NEW** manual tilt drum handler.

Drum Cones

Control pour of dry materials from drum and reduce dust

Choose correct Drum Cone size for each diameter from 15.5" up to 23.5" (39.4 to 59.7 cm)

- Centered cones with 45° angle (below)
- Longer centered cones with 60° angle
- Asymmetric cone (shown right) is offset
- Mild steel or type 304 stainless steel cones



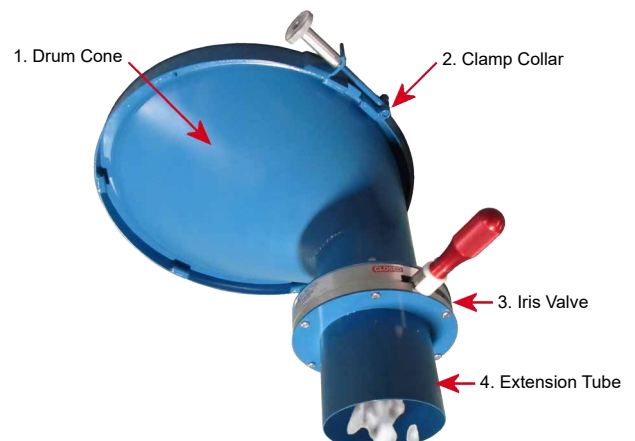
1. 45° Drum Cone
2. Clamp Collar
3. Iris Valve



1. Stainless Steel 45° Drum Cone
2. Stainless Steel Clamp Collar
3. Stainless Steel Slide Gate

Order as Four Separate Components:

1. Drum Cone: Choose 45° or 60° centered cone, or asymmetric cone
2. Clamp Collar to secure cone to drum
3. Valve: Choose Iris Valve or Slide Gate
4. Extension Tube mounts to Iris Valve or directly to cone valve flange



HYDRA-LIFT KARRIERS



Model 400A-96-110

- Carbon steel with durable powder coat finish
- 96" (244 cm) maximum pour height
- Plug-in electric power drum lift and tilt

400 Series Hydra-Lift Karriers

- Safety conscious drum handling
- Lift, move and pour 800 Lb. (363 kg) drum
- Control drum tilt 360° in either direction
- Pour with faucet or drum cone in place



Model 400A-96SS-125

- Stainless Steel frame with bead blast finish
- 96" (244 cm) maximum pour height
- Battery power drum lift and pull chain drum tilt

- **Select best model for your application**
 - Models with AC, 12V DC or Air power lift and tilt
 - 400A-96 Models pour up to 96" (244 cm) high
 - 400A-60 / 72 Models pour up to 72" (183 cm) high
 - Stainless steel and spark resistant models
- **MORCINCH™** Drum Holder automatically adjusts for 22" to 23.5" (56 to 59.7 cm) diameter drum
- Install **MORCINCH™** Kit for plastic drum or fiber drum
- Insert correct size Diameter Adapter for smaller drum



Model 410-110 (shown)

has electric power (AC 1-phase 115V) drum lift and tilt

410 Series Heavy-Duty Hydra-Lift Karriers

- Lift, move and pour 1200 Lb. (544 kg) drum
- Pour up to 72" (183 cm) high
- Greater stability when pouring
- More narrow footprint
- Incorporates **MORCINCH™** Drum Handling System

Heavy-Duty Hydra-Lift Karriers have twin boom overhead design and dual lift cylinders for higher capacity and greater stability when lifting and pouring.

Parallel legs provide more narrow footprint. Nylon wheels.

VERTICAL-LIFT POURERS



510 and 520 Series Vertical-Lift Drum Pourers

- Lift, move and pour 800 Lb. (363 kg) drum up to 106" (269 cm) high
- Lifts drum straight up
- Rotate drum 360° in either direction
- Easily maneuvered compact base and turning radius
- Ergonomic DC battery, AC electric or Air power
- Install **MORCINCH™** Kit for plastic drum or fiber drum
- Insert correct size Diameter Adapter for smaller drum
- Stainless steel and spark resistant models available



Type 304 stainless steel models for food and pharmaceutical applications

515 and 525 Series

Two Scale Types Available

Scale-Equipped Drum Pourers

Weigh as you pour!

Dispense exact amount needed... weight displays on built-in scale indicator. Eliminate need to move drum to separate scale.



Intrinsically safe for hazardous areas



Scale NOT for hazardous environments

- **510 and 515 Series**
Single-stage to pour up to 60" (152 cm) high
- **520 and 525 Series**
Two-stage to pour up to 106" (269 cm) high



Scale-equipped to dispense measured amount from drum



Power-Propelled Drum Handlers

- Pour up to 10.5 feet (3.2 m) high!
- Fully invert drum in just 8 seconds
- Familiar propulsion and steering controls
- Straddle Pallet
- Incorporates **MORCINCH™** Drum Handling System

Model # 900

- Capacity: 1500 Lb. (680 kg)

Scale-Equipped Model # 905

- Weigh drum while pouring
- Dispense exact amount needed
- Capacity: 800 Lb. (363 kg)



Model # 915

< PILOT > **MORSPEED™** Drum Mover / Stacker

Lift upright drum up to 9.5 feet (2.9 m) high! Proven **MORSPEED™** safety conscious drum grabber handles almost any rimmed drum. Mechanism automatically releases drum when you set drum down.

Capacity: 1500 Lb. (680 kg)

FORKLIFT-KARRIERS



Manual Grip and Tilt Forklift-Karriers

- Lift, move, and pour drum with your forklift
- Rotate drum 360° in either direction
- Install **MORCINCH™** Kits (page 3) to handle plastic, fiber or smaller drum

Add safety conscious drum handler to your forklift. Mounts quickly onto forks without power connections. Control pouring right from forklift.

We recommend **MORStop Tilt-Brake™** Option to automatically hold drum tilt angle, even when contents shift. Fits manual tilt 800 Lb. (363 kg) or 1500 Lb. (680 kg) model.



Forklift-Karriers

800 Lb. (363 kg) Capacity

Control drum tilt with 30:1 ratio

Model 285A (above) made of carbon steel

Model 285AM with spark resistant parts

Heavy-Duty Forklift-Karrier

1500 Lb. (680 kg) Capacity

Finer tilt control with 60:1 ratio

Model 285A-HD made of carbon steel

Model 285AM-HD spark resistant parts

Model 285A-HDSS T304 stainless steel

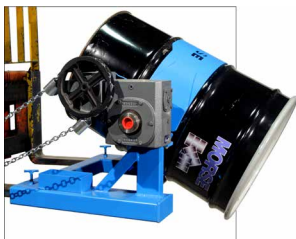


Extra Heavy-Duty Forklift-Karrier

2000 Lb. (907 kg) Capacity

Enclosed worm gear speed reducer for drum tilt control with 150:1 ratio. Secure drum with two web straps.

Model 285A-GR



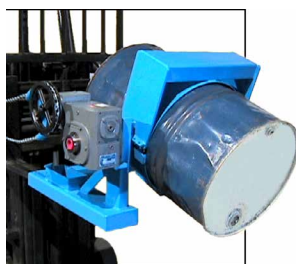
Super-Duty Forklift-Karriers

2500 Lb. (1134 kg) Capacity

Heavily reinforced 3-piece drum holder. Enclosed worm gear speed reducer with 150:1 ratio drum tilt control.

Model 285XGR made of carbon steel

Model 285XMGR spark resistant parts

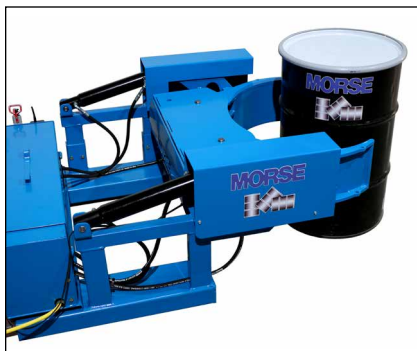


Model 290F with
Option 6172XL-P

Battery Power Grip and Tilt

GRIP+GO™

- Self-contained battery power drum grip and tilt
- Handle 14" to 24" (35.6 to 61 cm) diameter drum
- Fully invert drum



Model 290F
Capacity: 1500 Lb. (680 kg)

Grab drum from floor, pallet, rack, truck, etc. Lift, move and pour right from your forklift.

Self-contained 12V battery powered grip and tilt function. Requires no connection to forklift power or hydraulics.

Requires 25" (63.5 cm) between forks.

- **Option 6172XL-P** Extra Large Grip Pads for plastic or fiber drum
- **Option # 6149i-P** Wireless Grip and Tilt control
- **Option # 6320i-P** Camera provides operator clear view of pour

Battery Power Tilt (Manual Grip) Forklift-Karriers

Control drum tilt with 2-button wired pendant to pour. On-board battery requires no truck power connection or modification.

Model 285A-BP
1500 Lb. (680 kg) capacity. Fully invert drum in 15 seconds. Install **MORCINCH™** Kit to handle plastic, fiber or smaller drum.

Model 285XBP
2500 Lb. (1134 kg) capacity. Fully invert drum in 26 seconds. Insert Diameter Adapter 55/30-19GR for 30-gallon (114L) steel drum.



Model 285A-BP

Option 4804i-P
Wireless tilt control



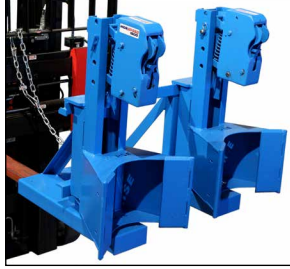
FORKLIFT ATTACHMENTS

MORSPEEDTM 1500

Capacity: 1500 Lb. (680 kg) per drum



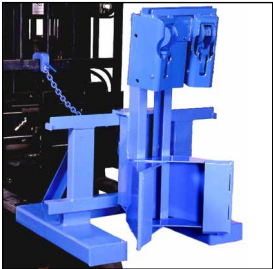
Model 288-1 for 1 drum



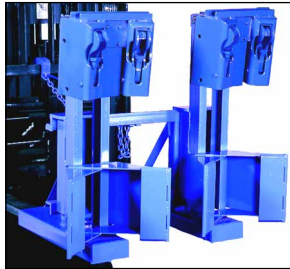
Model 288-2 for 1 or 2 drums



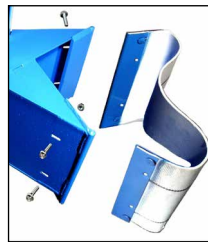
Reliable, automatic drum grip. Models with two heads per drum distribute weight to reduce stress on drum.



Model 288-1-2H
Two heads for 1 drum



Model 288-2-2H for 1 or 2 drums. Two heads per drum.



Option 2523-P
Belt Kit to help protect drum sidewall

Move More Drums with MORSPEEDTM

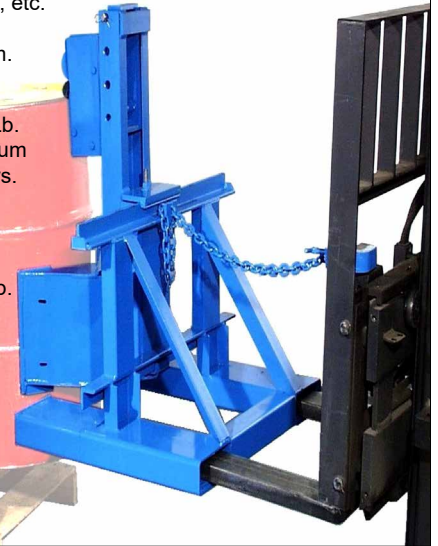
- Lift and move upright drums with your forklift
- Mounts on forks in seconds with no tools
- No power connections
- Raise forks to grip upper rim of steel, plastic or fiber drum
- Require 16.5" (41.9 cm) between forks
- Each fork pocket opening is 6.5" wide x 2.5" tall (16.5 x 6.35 cm)

Load drums onto trucks, pallets, etc. Handle any diameter drum.

Requires 75 Lb. (34 kg) per drum to actuate jaws.

Models with two heads per drum require 350 Lb. (159 kg)

Requires 24" (61 cm) minimum drum height



MORSPEEDTM 1000

Capacity: 1000 Lb. (454 kg)

Lift and move upright drum without leaving fork truck. Raise forks to grab drum top rim. Lower drum to floor or pallet to release grip.

Contoured steel jaws securely grasp drum rim. Jaws are mechanical and automatic. Requires 50 Lb. (23 kg) drum to actuate jaws and 18" (46 cm) minimum drum height.

Model 286-1 single drum handler

Model 286M-1 with spark resistant parts



Handle rimmed plastic, steel or fiber drum



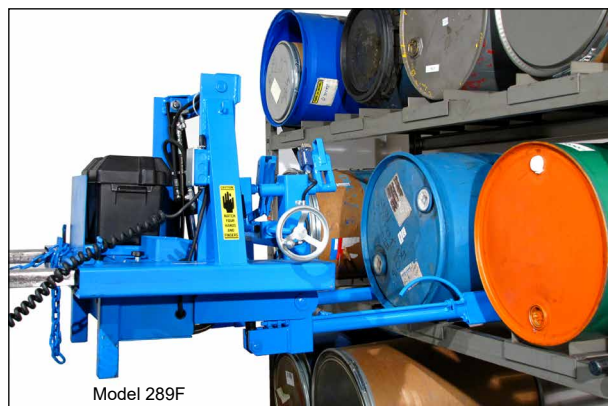
MORStakTM Forklift Mounted Drum Rackers

- Safety conscious drum racking with your forklift
- Avoid dangerous bare fork drum handling
- Lift rimmed 55-gallon (210L) steel or plastic drum
- Rack drums side by side with faucet for dispensing
- 800 Lb. (363 kg) capacity

Manually engage positive drum grip. Safety feature prevents tilt without grip engaged. Self-contained battery powered wired pendant. Add wireless tilt control option.

Model 289F Fork mount drum racker

Model 289C Carriage mount drum racker



Option 4804i-P
Wireless tilt control

KONTROL-KARRIERS



Kontrol-Karriers

800 Lb. (363 kg) Capacity

Geared drum tilt control with 30:1 ratio

Model 185A (above) made of carbon steel

Model 185AM has spark resistant parts

Heavy-Duty Kontrol-Karriers

1500 Lb. (680 kg) Capacity

60:1 ratio geared tilt control

Model 185A-HD
made of carbon steel

Model 185AM-HD
has spark resistant parts

Model 185A-HDSS
(shown) made of
type 304 stainless steel



Extra Heavy-Duty Kontrol-Karrier

2000 Lb. (907 kg) Capacity

Enclosed worm gear speed reducer drum tilt control with 150:1 ratio. Two web straps secure around drum.

Model 185A-GR



Super-Duty Kontrol-Karrier

2500 Lb. (1134 kg) Capacity

Heavily reinforced all steel 3-piece drum holder with toggle clamp to secure drum. Enclosed worm gear speed reducer drum tilt control with 150:1 ratio.

Model 185XGR
made of carbon steel

Model 185XMGR
with spark resistant parts



- Safety-conscious drum handling with your hoist
- Rotate drum 360° in either direction
- Load tested at Morse factory as per American National Standard ASME B30.20. Each unit ships with Load Test Certificate.

195 Series Power-Tilt Kontrol-Karriers

Ergonomic powered drum rotation. Fully invert drum in 15 seconds. Electric models have 2-button pendant. Air powered models have hand-held control valve.

Capacity: 1500 Lb. (680 kg)



Custom stainless steel model



Model 195A-1-115

85 Series Drum Karriers

Safely lift and pour drum within reach. Grasp drum by hand to tilt. Lock drum horizontal or at 45° to pour. Lock upright to transport.

Capacity: 800 Lb. (363 kg)

Model 85i and stainless steel model 85i-SS
for 55-gallon (210L) steel drum accept **MORCINCH™**
Kits (page 3) for plastic, fiber or smaller drum.

Model 85A is only for 55-gallon (210L) steel drum

Model 85AM like 85A, but with spark resistant parts



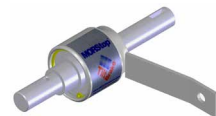
Fork Pocket Kits

Fork Pocket Kit 6315-P for models 85A, 85G, 85i, 86, 185A, 185G, 185A-HD or 185G-HD

Fork Pocket Kit 6333-P for 3" (7.6 cm) wide cross tube: 185A-GR, 185XGR or 195 Series



Manual Tilt Control Options	
Option #	Description
X02	9" Hand Crank on 185A, 185G, 185A-HD or 185G-HD
X03	16" Hand Wheel on 185A, 185G, 185A-HD or 185G-HD
3900i-P	MORStop Tilt-Brake™ factory installed on new unit
3900-P	MORStop Tilt-Brake™ Kit for customer to install



We recommend factory installed option 3900i-P **MORStop Tilt-Brake™** to automatically prevent uncontrolled drum tilting

BELOW-HOOK LIFTERS

92 Series

Below-Hook Drum Lifters

One Handler to Lift Them All

- Rimmed steel, plastic or fiber drum
- Lift a range of drum sizes
- Grip under drum rim
- Capacity: 1000 Lb. (454 kg)



Model 92 for 18" to 26" (46 to 66 cm) diameter

- **Model 92M** has spark resistant parts
- **Model 92-SS** made of stainless steel

Model 92-30 for 15" to 23" (38 to 58 cm) diameter

Model 92-5 for 11" to 15" (28 to 38 cm) diameter



90 Series

Verti-Karriers

Lift rimmed 55-gallon (210L) steel drum

Automatic alternating grip and release enables remote drum placement and discourages dangerous climbing

Capacity: 1000 Lb. (454 kg)



Model 90 for 55-gallon (210L) steel drum

Model 90M has spark resistant parts

Model 90-SS made of stainless steel

Model 90-30 for 30 gallon (114L) steel drum

Model 90-85 for 85-gallon (322L) steel salvage drum

Model 91

Lifter for Steel Drum and Overpack

Simple tong design with broad grippers. Narrow to lower into overpack.

Handle 55 to 85 gallon (210 to 321L) steel drum or overpack.

Capacity: 1000 Lb. (454 kg)



86 Series

Drum Lifters

- Under-drum support
- **Secure Web Strap** around drum

Lift 55-gallon (210L) steel, plastic or fiber drum with your hoist.

Capacity: 1000 Lb. (454 kg)

Model 86 made of carbon steel

Option 6314i-P Cinch Chain around drum

Model 86-SS is stainless steel

Option 6314SSi-P Stainless Steel Cinch Chain around drum



Model 42

Heavy-Duty Steel Drum Lifter

Two different lift modes:

1. Horizontal mode
2. Off-vertical mode to upend or down end drum

Alloy chain, links and lifting ring. Forged steel hooks engage drum rims.

Handle: 55 to 85-gallon (210 to 321L) steel drum

Capacity: 2000 Lb. (907 kg)



Drum Lifting Hook

Lift horizontal 55-gallon (210L) steel drum with your crane

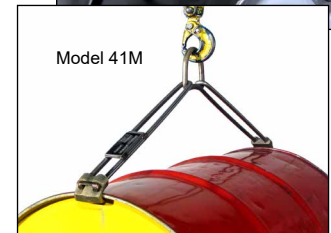
Lift 55-gallon (210L) steel drum 34" to 36" (86 to 91 cm) long.

Capacity: 1000 Lb. (454 kg)



Model 41 alloy steel lifting ring, steel rods, malleable iron hooks

Model 41M spark resistant aluminum/bronze alloy lifting ring and hooks, stainless steel rods



Fork Mount Hook

Slide onto fork and tighten T-screw to use forklift as below-hook lifter.

Capacity: 2000 Lb. (907 kg)

Model 284

5.5" x 1.56" (14 x 4 cm) fork openings

Model 284L

8.5" x 3.69" (21.6 x 9.7 cm) openings



DRUM TUMBLERS

IMPORTANT

Install all Morse Drum Rotators in accordance with OSHA, CSA and EU requirements for enclosure and safety interlock, etc.

Morse Guard Enclosure has Safety Interlock to automatically shut off drum rotator when gate is opened.

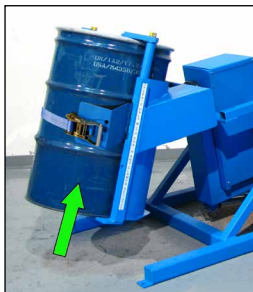


310 Series Tilt-To-Load Drum Tumblers

- Ergonomic Floor-Level Loading and Hydraulic Power Lift
- Vigorous “corner-over-corner” mixing
- Tumble 30 to 55 gallon (114 to 210L) steel, plastic or fiber drum
- Vary drum rotation from 5 to 20 RPM with hydraulic control
- Capacity: 800 Lb. (363 kg) Full Drum
400 Lb. (181 kg) Half-Full Drum



Easy-Load Tumbler



Hydraulic Power Lift



Explosion-proof boxes only have start/stop buttons

Control Package for 310 & 456 Series



Enclosure with Interlock



309 Series Drum Tumblers™

- Load Drum with Your Hoist
- Thorough “corner-over-corner” mixing
- Tumble 30 to 55 gallon (114 to 210L) steel, plastic or fiber drum
- Choose fixed 14 RPM or variable speed model
- Capacity: 800 Lb. (363 kg) Full Drum,
400 Lb. (181 kg) Half-Full Drum



Load with Your Hoist



Explosion-proof boxes only have start/stop buttons

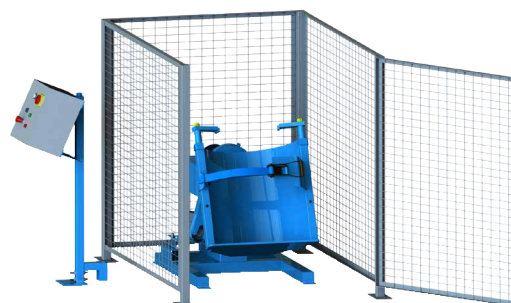
Control Package for 309 & 5154 Series
Variable Speed Models

311 Series Complete Tilt-To-Load Drum Tumblers

- Include 310 Series Tumbler, Automated Controls and Enclosure with Interlock



Automated Controls lift drum, rotate for time you set, then return drum to floor-level for easy handling



Enclosure with Interlock

Mix Inside a Closed Drum

- Remix settled ingredients **WITHOUT** insertion mixer
- **NO** transferring contents or clean-up
- **NO** spills, contamination or exposure to contents

3 Components Sold Separately

Rotator

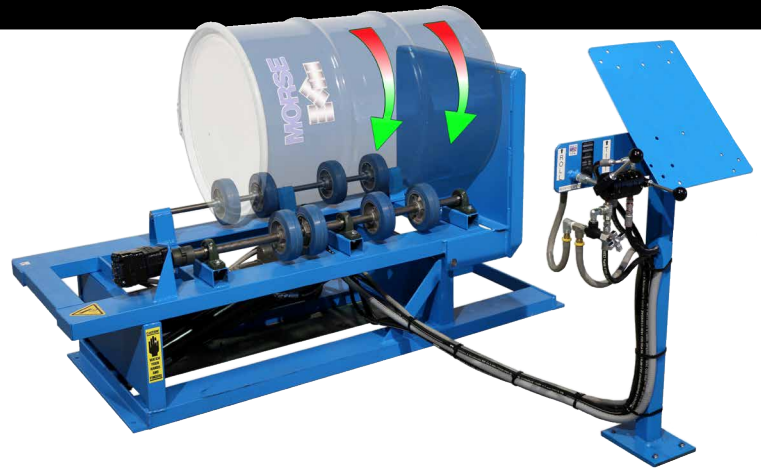
+

Control Package

+

Enclosure

DRUM ROLLERS



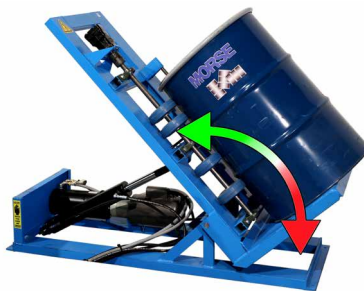
456 Series

Hydra-Lift Drum Rollers

- Easy Floor-Level Loading and Hydraulic Power Lift
- Roll drum on its side to more gently mix contents
- Roll 55-gallon (210L) drum from 5 to 20 RPM with hydraulic control
- Capacity: 1000 Lb. (454 kg) liquid load, 400 Lb. (181 kg) dry load



Easy-Load Drum Roller



Hydraulic Power Tilt



Enclosure with Interlock

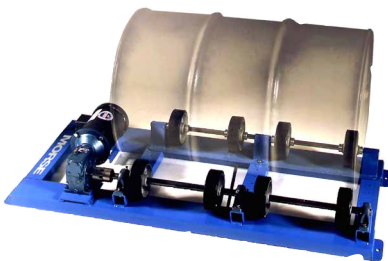
Option POLY-456
Roll a plastic drum. Extra wheels support flexible sidewall.

End stop prevents drum traveling lengthways.

Option 1-5-1
Idler Attachment to roll 1 to 5 gallon (20L) pail

5154 Series

Stationary Drum Rollers



Single Roller (shown) for 1 drum
Double Rollers for 1 or 2 drums

- Load horizontal drum onto roller with your hoist
- Rolls drum for gentle mix
- Capacity:
Liquid load: 1000 Lb. (454 kg)
Dry load: 300 Lb. (136 kg)
- Choose fixed 20 RPM or variable speed model

Option POLY-1-5154

to roll plastic drum on single roller

Option POLY-2-5154

to roll plastic drums on double roller

Option 1-5-1 Idler Attachment
to roll 1 to 5 gallon (4 to 20L) pail



Load Drum with Your Hoist



Enclosure with Interlock

201 Series

Portable Drum Rollers



- Rock-Over Drum Loading
- Rolls drum to gently mix
- Choose fixed 20 RPM or variable speed model
- Dispense directly from drum
- Capacity:
Liquid load: 500 Lb. (227 kg)
Dry load: 300 Lb. (136 kg) at 20 RPM

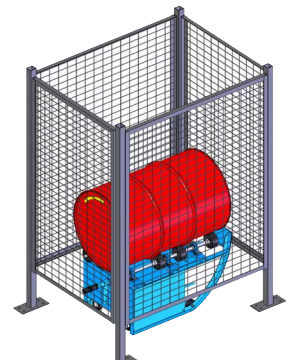
Option POLY-201

to roll plastic drum

Option 1-5P Idler Attachment
to roll 1 to 5 gallon (4 to 20L) pail



Rock-Over Drum Loading



Enclosure with Interlock

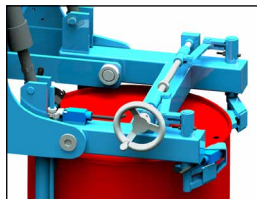
DRUM RACKERS

Morse Drum Rackers

- Safety-conscious equipment to eliminate dangerous bare fork drum handling
- Lift and rack RIMMED 55-gallon (210L) steel or plastic drum
- Rack drum with faucet to use in dispensing station
- Ergonomic Battery, AC or AIR power lift and tilt control
- Air power models available with spark resistant parts
- Capacity: 800 Lb. (363 kg)

MORStak™ Drum Rackers

- 620 Series rack drum up to 102" (259 cm) high
- 611 Series rack drum up to 56" (142 cm) high
- Compact footprint
- Lifts drum straight up
- Rack drums side by side with virtually no space between them



1. Manually secure clamp to grip drum



2. Raise drum



3. Tilt drum to horizontal and transport to racking location



4. Manually release clamp. Raise drum to place in rack.



Move in tight spaces where forklift won't fit. 6 Foot (183 cm) turning radius.



MORStak™ Power-Propelled Drum Racker

- Rack drum up to 10.5' (3.2 m) high
- Self contained battery power lift, move and tilt
- Lifts drum straight up
- Rack drums side by side with virtually no space between them

Self-Propelled MORStak™ Drum Racker to place RIMMED 55-gallon (210L) steel or plastic drum horizontally in rack up to 10.5 feet (3.2 m) high! Move drums on and off racks, pallets, trucks, etc.



405 Series Omni-Lift™ Drum Rackers

- Rack drum up to 72" high (183 cm)
- Larger footprint than MORStak™ Rackers
- Lifts drum in arc, requiring tilt angle adjustment once drum is raised
- Requires space between racked drums

Ergonomic powered models provide quicker drum racking. Air power and manual models available with spark resistant parts.

Grip Pad Option # 3313-P is REQUIRED to rack RIMMED plastic 55-gallon (210L) drum.

Model 405 shown has hand pump drum lift and hand crank drum tilt



DRUM PALLETIZERS



Model 82A-GT-125 shown has battery power drum lift

82A-GT Series Drum Palletizers with Geared Drum Tilt

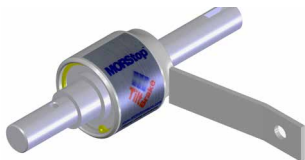
- Hand Crank Geared Tilt
- Pour to 26" (66 cm) high
- V-shaped base to access pallet
- Capacity: 600 Lb. (272 kg)

Raise upright drum up to 20" (51 cm) above floor. Control drum turning with hand crank geared tilt 360° in either direction to dispense. Move drum onto and off pallet.

Ergonomic power-lift models provide quicker and safer drum handling.

Choose battery, AC or air powered drum lift. Air power and manual models available with spark resistant parts.

Add **MORCINCH™** Kits (page 3) for plastic, fiber or smaller drum.



We recommend factory installed **MORStop Tilt-Brake™** Option 3900i-P to automatically prevent unwanted drum tilting, even when contents shift

82A Series Drum Palletizers that Pour

- Lift upright drum 20" (51 cm) high
- Pour up to 26" (66 cm) high
- Rotate drum by hand 360° in either direction
- Move drum on and off pallets
- Capacity: 600 Lb. (272 kg)

Handle 55-gallon (210L) steel drum. Lock drum horizontal to dispense, or upright to transport.

Ergonomic power-lift models provide quicker battery, AC or air powered drum lift. Manual model has hand pump drum lift.

Add **MORCINCH™** Kits (page 3) to handle plastic, fiber or smaller drum.

Stainless steel models available.



81 Series Drum Spotters

- Easily move RIMMED drum on and off pallets
- Capacity: 800 Lb. (363 kg)

Compact, easy-to-use Drum Palletizer. Raise handle to engage hooks under upper drum rim.

Lower handle to lift drum from floor or pallet up to 6" (15 cm) tall. Fully supports drum weight. Handle RIMMED 55-gallon (210L) steel, plastic or fiber drum from 34" to 36" (86 to 91 cm) tall.

Model 81 made of carbon steel

Model 81M has spark resistant parts

Model 81-SS made of stainless steel



82H Series Drum Movers / Palletizers

- Lift drum up to 19" (48.3 cm) high
- Move drum to and from pallet, spill containment, etc.
- Capacity: 1000 Lb. (454 kg)

Automatically grips upper drum rim as you raise.

Lift and move upright drum. Jaws release once drum is resting on floor, pallet, etc.

Handle RIMMED steel, plastic or fiber drum with minimum height of 22.5" (57 cm). Requires at least 75 Lb. (34 kg) to actuate jaws.

Ergonomic battery, AC or air power drum lift.

Air power and hand pump models available with spark resistant parts.

Stainless steel models.



Model 82H-125 shown has battery power lift

80 Series Mobile-Karriers

- Raise, move and pour drum
- Capacity: 800 Lb. (363 kg)

Fully supports and balances 55-gallon (210L) drum. Rotate drum by hand 360° in either direction. Pour up to 17" (43 cm) high. Lock drum upright to transport or horizontal to pour.

Model 80i and stainless steel model **80i-SS** for 55-gallon (210L) steel drum accept **MORCINCH™** Kits for plastic, fiber or smaller drum.

Model 80A for 55-gallon (210L) steel drum only

Model 80AM with spark resistant parts for 55-gallon (210L) steel drum only

Model 80APS has Anti-Slip Strips for 55-gallon (210L) plastic or steel drum



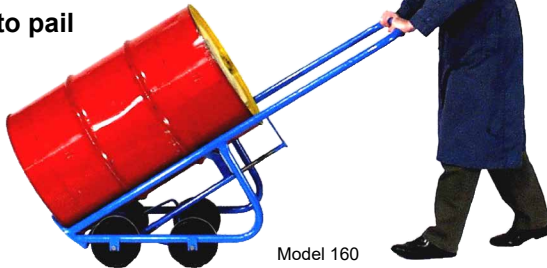
TRUCKS - DOLLIES - CRADLES

160 Series

4-Wheel Drum Trucks

Best Drum Truck... Move Drum with Ease

- Long handle provides extra leverage
- Truck fully supports drum weight
- Palletize drum
- Dispense into pail
- Capacity: 1000 Lb. (454 kg)



Model 160

Handle rimmed 30 to 85 gallon (114 to 321L) drum size. Stand upright for storage.

Stainless steel and spark resistant models

Rough Terrain models (below) have tires outside frame for greater stability



Model 160-WP



Model 160-SS



Model 160-WP-SS
Stainless Steel

2 & 3 Wheel Drum Trucks

Model 152 and 153 Drum Trucks

2-wheel drum trucks with 10" (25.4 cm) wheels. Handle 30 to 85 gallon (114 to 321L) size drum. Capacity: 1000 Lb. (454 kg)

Model 152 has rubber wheels

Model 153 has polyolefin wheels

Model 155 Handstand Drum Truck adds support to stand upright for storage



Model 125 "No Spill" Drum Truck

Transport upright drum. Built-in handle attached to base. Two wheels and rear swivel caster.

Handle drum with up to 24" (61 cm) diameter.

Capacity: 1,200 Lb. (544 kg)



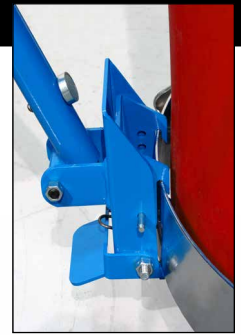
Dolly Handle

Patented Model 24

Increases worker safety and efficiency.

Attach to sidewall of drum dolly with downward push to engage quick-coupling mechanism. Easily disengage and connect to another dolly.

Use only with round metal drum dollies.



Drum Dollies

Drum dollies with 3" (7.6 cm) MORTuf polyolefin swivel casters. Choose correct size carbon steel, spark resistant or stainless steel dolly. Capacity: 1000 Lb. (454 kg)

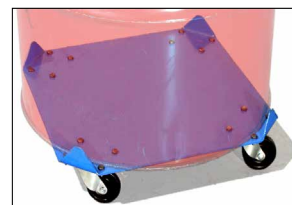
14 Series

Round Drum Dollies

Move drum on wide stance base. Fit up to 23" (58.4 cm) O.D.



Model 14-SS



Model 34

34 Series

Square Drum Dollies

Rounded, turned up corners hold drum in position. Fit up to 24" (61 cm) O.D.

Drum Cradle Trucks

Easy-to-load rock over loading

Model 36 Cradle Truck 55-gallon (210L) cradle includes built-in tipping lever. Capacity: 500 Lb. (227 kg)

Model 36-SS made of stainless steel

Model 40 Cradle Truck

Capacity: 700 Lb. (318 kg)

Model 40-30 for 30-gallon (114L) drum

Model 31 steel Tipping Lever for model 40 or 40-30. Has rim hook to assist in loading heavy drum.



Model 40 and Model 31

Model 46 Cradle

Truck for 15-gallon (57L) steel drum.

Capacity: 500 Lb. (227 kg)

Model 32 Drum Upender provides leverage to upright a horizontal steel drum



Model 32

5-GALLON PAIL HANDLERS

PailPRO[™] Series[™] 5-Gallon Pail Handlers

- Ergonomic, safety conscious pail handling
- Help prevent repetitive motion injuries
- Increase productivity

PailPRO[™] 5-Gallon Can Tumblers

- Mix contents inside closed cans
- No exposure, No mess, No clean-up



2-305 Series
Double Can Tumblers



1-305 Series
Single Can Tumblers

- Tumble sealed cans to mix contents, deburr or polish parts
- 23 RPM end-over-end continuous rotation. Does **NOT** shake or oscillate.
- For 1 to 5 gallon (4 to 20L) can
- OSHA, CSA and EU require enclosure with interlock (sold separately)
- **Capacity:**
100 Lb. (45 kg) per can



Options for Larger Cans up to 16" (40.6 cm) diameter and 11" to 22" (28 to 55.9 cm) tall. This option also requires larger enclosure.

PailPRO[™] Below-Hook Can Tipper

Model 85-5

Lift and pour a 5-gallon (20L) plastic or metal pail, 11" to 12" (28 to 31.5 cm) in diameter.

Capacity:
200 Lb.
(91 kg)



PailPRO[™] Below-Hook Pail Lifter

Model 92-5

Lift a 5-gallon (20L) pail with 11" to 15" (28 to 38 cm) diameter

Capacity:
1000 Lb.
(454 kg)



PailPRO[™] 5-Gallon Pail Dollies

Reduce repetitive lifting. Move 5-gallon (20L) pail on flat deck with four rounded corners turned up to hold pail position.

Capacity: 200 Lb. (91 kg)

Model 34-5 has steel construction

Model 34-5SS type 304 stainless steel



PailPRO[™] 5-Gallon Pail Handlers

- Lift, move and pour 5-gallon (20L) pail
- Dispense to 5 feet (152 cm) high
- Handle pail with 11" to 12" (28 to 31.5 cm) diameter

Lift, transport and pour 5-gallon (20L) pail. Easy to maneuver. Compact design moves through standard doorways.

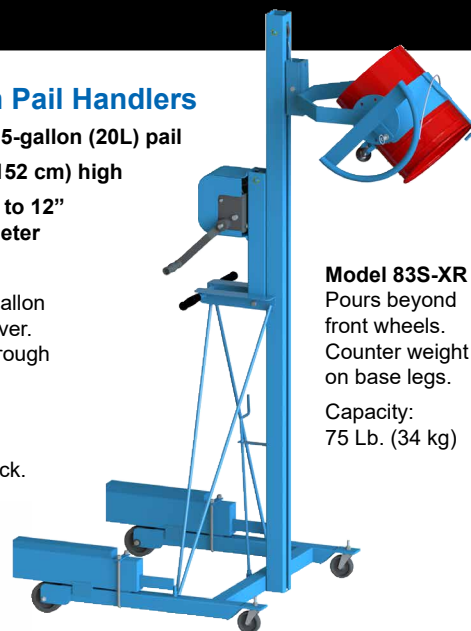
Tilt pail with hand wheel.
Lock in pouring position.
Prevent rolling with floor lock.



Model 83

Pours between Legs

Capacity:
150 Lb. (68 kg)



Model 83S-XR

Pours beyond front wheels. Counter weight on base legs.

Capacity:
75 Lb. (34 kg)



PailPRO[™] 5-Gallon Pail Heaters

Heat 5-gallon (20L) pail. 4" (10.2 cm) Band conforms to curvature of pail to heat contents. Adjust thermostat to maintain temperature.

Model 152-5

PailPRO[™] 5-Gallon Pail Truck

Ergonomic truck to handle heavy 5-gallon (20L) pail. Place pail handle over hook and pull back to lift pail. Truck stands upright by itself.

Two 8" (20.3 cm) hard polyolefin wheels.

Capacity: 150 Lb. (68 kg)



PailPRO[™] Can Tipper

Dispense 5-gallon pails

Pour small quantities from 5-gallon (20L) can. Safety lock holds pail in place. Folds for storage.

Capacity: 75 Lb. (34 kg) per can

Model 15 for single pail

Model 15-SS stainless steel

Model 2-15 for two pails



Model 2-15



Model 15-SS



The Specialist In Drum Handling Equipment

Morse Manufacturing Company, Inc.
103 Kuhn Rd.
Syracuse, NY 13208

Phone: (315) 437-8475

Fax: (315) 437-1029

Email: info@morsedrum.com

Website: morsedrum.com



Drum and Pail Heaters

- Simple, effective way to heat drum contents
- Flexible 4" (10 cm) band conforms to drum curvature
- **MUST** position **BELOW** content level in drum
- Adjust thermostat to maintain temperature



Use two drum heaters on single drum for faster warming

NOT for use with flammables or in explosion hazard areas.

- Heaters for metal drum have 50° to 425° F (10 to 218 C) thermostat
- Plastic or fiber drum heaters have 50° to 160° F (10 to 71 C) thermostat

Drum Faucets



Model 65-20

Grey iron Molasses Gate Faucets for viscous liquids have brass sliding plate closure

Model 65-20
fits drum 2" (5.1 cm)
pipe thread

Model 65-75
fits 3/4" (1.9 cm)
drum bung

Poly faucets control flow with fast half-turn handle. For more fluid non-flammable, corrosive liquids.

Model 68-20 P fits 2" (5.1 cm) bung of metal drum

Model 68-75 fits 3/4" (1.9 cm) metal drum bung thread.



Models 68-75 and 68-20

MORplug™ Drum Wrenches

Fit virtually any steel or plastic drum

Generous size provides extra leverage and hand clearance

Model 59 ductile iron wrench for nonflammable materials

Model 59SRM spark resistant manganese bronze wrench, a precaution for flammable material

Model 59SRZ economical spark resistant, high-strength zinc aluminum alloy wrench



Model 59



Model 59SRM



Drum Hand Pumps

Drum Pumps to dispense liquids

Self priming piston pumps on forward and back strokes yield 1 gallon in fewer than five cycles. For liquids up to 80° F (25 C) and maximum of 2000 SSU viscosity (e.g. 30W motor oil).

Check Drum Pump Spec Sheet for chemical compatibility. Always take appropriate safety and protective measures with hazardous chemicals.

Available from:

S&G ENTERPRISES INC.

262-251-8300 Fax 262-251-1616

<https://www.ramflat.com/morse/>

Morse@RamFlat.com