

MORSE

The Specialist In Drum Handling Equipment

2024



www.RamFlat.com/Morse

Authorized Dealer: S&G Enterprises Inc

Phone: (262) 251-8300

Email: Morse@RamFlat.com



Since 1923, Morse Manufacturing has been dedicated to giving you more - and in today's world of increased domestic and international competition, you should expect more.

What can you expect from Morse Manufacturing?

- **Customer Service:** Expect personal attention from one of our customer service representatives. Visit the Company Directory on our website, give us a call and let us get to know you personally.
- **Dealer Support:** We value your time and your knowledge! You can expect assistance with any drum-handling question when you contact us.
- **Product Support:** If you have a technical question, expect to speak with one of our design engineers. We strive to make sure you get the best product to meet your needs.
- **Product Selection:** Morse offers the most extensive line of drum handling equipment. If you don't see what you need in our standard offering, our custom capabilities will help meet your application requirements.
- **Product Quality:** Every Morse Product design was professionally engineered in-house to exceed industry standards. You see foreign products that look like a Morse? Know with confidence who designed the original! We are so confident in our products, our skilled employees, our certified welders, and our production process that we offer a 2-year warranty against defects.
- **Product Information:** Current and informative product literature and parts diagrams. Visit the literature pages on our website. We labor tirelessly to keep our literature up to date and you informed of any product introductions or changes.
- **History:** With over 100 years of history, you can expect us to provide you with replacement parts or product upgrades when you need them in the future - 5, 10, or 20 years from now. Morse is committed to manufacturing our products in the USA.

Thanks for considering Morse for your drum handling needs. Please feel free to contact us.

Nathan R. Andrews

Nathan Andrews
 President
 Phone: (315) 437-8475
 Email: info@morsedrum.com



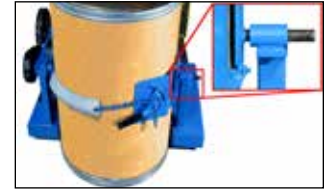
GRIPGO
 Power-Grip
 Fork Mount
 Drum Handler

See page 6



SCAN ME

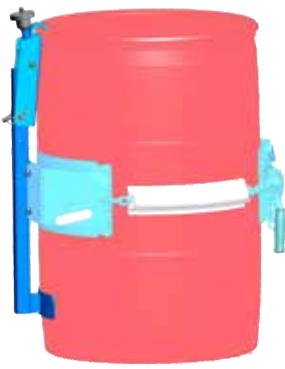
MORCINCH™ Drum Handling System



MORCINCH™ Drum Holder automatically adjusts for 22" to 23.5" (56 to 59.7 cm) diameter drum

MORCINCH™ Kits to Safely Handle Any Drum

Top Rim Clamp for RIMMED Drum



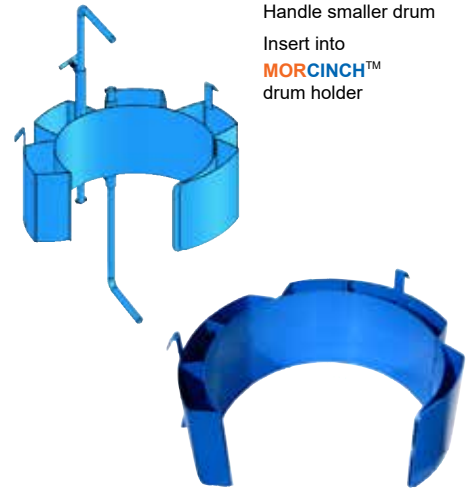
Clamp onto Top Rim
Prevents RIMMED 30 to 55 gallon (114-210L) plastic or fiber drum from slipping

Bracket Assembly for Rimless Drum



Prevents RIMLESS or RIMMED plastic or fiber drum from slipping
Adjust for 31-39" (79-99 cm) tall drum

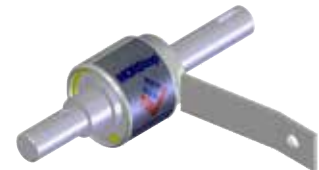
Diameter Adapters for Smaller Drums



Handle smaller drum
Insert into MORCINCH™ drum holder



MORStop Tilt-Brake™



MORStop Tilt-Brake™
automatically holds drum tilt angle



Drum Cones

- Control pour of dry materials
- Reduce dust
- Select correct size cone for each drum
- Centered or offset cones
- Mild steel or stainless steel



HYDRA-LIFT KARRIERS



400 Series Hydra-Lift Karriers

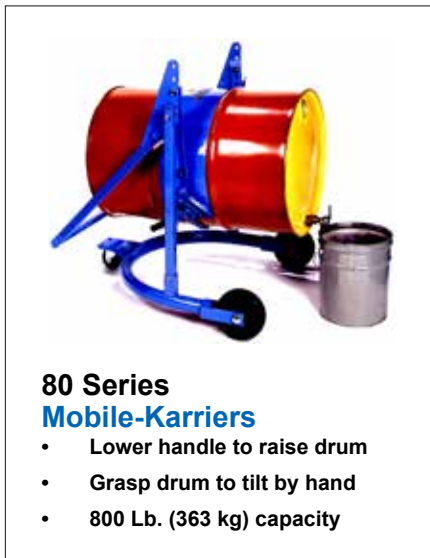
- 800 Lb. (363 kg) capacity
- 72" or 96" (183 or 244 cm) pour

Spark resistant and stainless steel models
Power lift and tilt models: AC, 12V DC or Air
Manual lift and tilt models
Rotate 360°



400S-XR Series Extended Reach

- 600 Lb. (272 kg) capacity
- Pour 20" (50.8 cm) beyond wheels at 71" (180 cm) high
- Access drum on pallet



80 Series Mobile-Karriers

- Lower handle to raise drum
- Grasp drum to tilt by hand
- 800 Lb. (363 kg) capacity



410 Series Heavy-Duty Hydra-Lift Karriers

- 1200 Lb. (544 kg) capacity
- 72" (183 cm) pour
- More stable: Twin boom, 2 cylinders
- Narrow footprint, parallel legs



VERTICAL-LIFT POURERS

SCAN ME

510 and 520 Series Vertical-Lift Drum Pourers

- Lifts drum straight up
- Compact base and turning radius
- Rotate 360°
- 60" or 106" (152 or 269 cm) pour
- 800 Lb. (363 kg) capacity



515 and 525 Series Scale-Equipped Vertical-Lift Drum Pourers

- Weigh drum while pouring
- Dispense amount needed
- No need for separate scale



Power-Propelled Drum Handlers

- Pour up to 10.5 feet (3.2 m) high!
- Fully invert drum
- Straddle Pallet

Model # 900 - Power Lift and Tilt

- Capacity: 1500 Lb. (680 kg)

Model # 905 - Scale-Equipped

- Weigh drum while pouring
- Capacity: 800 Lb. (363 kg)

Model # 920 - Power GRIP, Lift and TILT

- Capacity: 1500 Lb. (680 kg)



Model # 915

< PILOT > MOR SPEED™
Drum Mover / Stacker

Stack RIMMED upright drum up to
9.5 feet (2.9 m) high!
Capacity: 1500 Lb. (680 kg)

FORKLIFT-KARRIERS

Battery Power Grip and Tilt



- Power Grip and Tilt
- Self-contained battery
- Lift and pour right from forklift
- 14" to 24" (35.6 to 61 cm) diameter drum
- Requires 25" (63.5") between forks
- Capacity: 1500 Lb. (680 kg)



Manual Grip and Tilt Forklift-Karriers

- Safety conscious forklift drum handling
- Rotate drum 360°
- Mount quickly onto forks
- Requires 25" (63.5 cm) between forks
- Stainless steel or spark resistant models



Forklift-Karriers
800 Lb. (363 kg) Capacity
30:1 tilt ratio

Heavy-Duty Forklift-Karriers
1500 Lb. (680 kg) Capacity
60:1 tilt ratio

Extra Heavy-Duty Forklift-Karrier
2000 Lb. (907 kg) Capacity
150:1 tilt ratio
Secure drum with two web straps

Super-Duty Forklift-Karriers
2500 Lb. (1134 kg) Capacity
150:1 tilt ratio
Heavily reinforced drum holder with toggle clamp

Battery Power Tilt (Manual Grip)

- Manually secure drum in holder
- Control drum tilt with 2-button wired pendant
- Fully invert drum



Model 285A-BP
1500 Lb. (680 kg) capacity.
Secure drum with cinch chain and ratchet

Model 285XBP
2500 Lb. (1134 kg) capacity
Heavily reinforced drum holder with toggle clamp



SCAN ME

FORKLIFT ATTACHMENTS

Move MORE Drums with **MORSPEED™**

- Move upright drums with forklift
- Handle RIMMED steel, plastic or fiber drums
- Reliable mechanical drum grip
- Mount quickly onto forks
- Requires 16.5" (41.9 cm) between forks

MORSPEED™ **1500**

Capacity:
1500 Lb. (680 kg) per drum

Single and Double
drum handlers



MORSPEED™ **1000**

Capacity:
1000 Lb. (454 kg)

Requires 50 Lb. (23 kg) drum
to actuate jaws



MORStak™ **Forklift Mounted Drum Rackers**

- Safety conscious drum racking with your forklift
- Avoid dangerous bare fork drum handling
- RIMMED 55-gallon (210L) steel or plastic drum
- Rack drums side by side with faucet for dispensing
- 800 Lb. (363 kg) capacity



KONTROL-KARRIERS



- Safety-conscious below- hook drum handling
- Rotate drum 360°
- Stainless steel or spark resistant models
- Load tested at Morse factory as per American National Standard ASME B30.20.
Each unit ships with Load Test Certificate.

185 Series Manual-Tilt Kontrol-Karriers



**195 Series
Power-Tilt
Kontrol-Karriers**
Fully invert drum in 15 seconds
Capacity: 1500 Lb. (680 kg)

Kontrol-Karriers
800 Lb. (363 kg) Capacity
30:1 tilt ratio

**Heavy-Duty
Kontrol-Karriers**
1500 Lb. (680 kg) Capacity
60:1 ratio

**85 Series
Drum Karriers**
Lift and pour drum within reach
Grasp drum by hand to tilt
Capacity: 800 Lb. (363 kg)



**Extra Heavy-Duty
Kontrol-Karrier**
2000 Lb. (907 kg) Capacity
150:1 tilt ratio
Two web straps secure drum

**Super-Duty
Kontrol-Karriers**
2500 Lb. (1134 kg) Capacity
150:1 tilt ratio
Heavily reinforced drum holder
with toggle clamp



SCAN ME

BELOW-HOOK LIFTERS

Stainless or spark resistant models



92 Series

Below-Hook Drum Lifters

RIMMED steel, plastic or fiber drum

Lift a range of drum sizes

Grip under drum rim

Model 91 (not shown)
Lifter for ONLY Steel Drum or Overpack



90 Series Verti-Karriers

RIMMED 55-gallon (210L) steel drum

Alternating grip and release for remote lifting

86 Series Drum Lifters

Under-drum support

Steel, plastic or fiber drum



Model 42 Heavy-Duty Steel Drum Lifter

Two lift modes

55-85 gallon (210-321L) steel drum



Drum Lifting Hook

Horizontal 55-gallon (210L) steel

Standard or spark resistant model

Capacity: 1000 Lb. (454 kg)



Fork Mount Hook

Slide onto fork

DRUM TUMBLERS



SCAN ME



310 Series Tilt-To-Load Drum Tumblers

- Easy Floor-Level Loading
- Hydraulic Power Lift
- Variable drum RPM



- Vigorous “corner-over-corner” mixing
- 30-55 gallon (114-210L) steel, plastic or fiber drum
- Capacity:
800 Lb. (363 kg) Full Drum
400 Lb. (181 kg) Half-Full Drum



309 Series Drum Tumblers™

- Load upright drum with hoist
- Fixed or variable speed



ALL Drum Rotators REQUIRE Controls to Start / Stop



311 Series Complete Tilt-To-Load Drum Tumblers

- Includes Drum Tumbler, Automated Controls and Enclosure with Interlock
- Automated Controls lift drum, rotate for time set, then return drum to upright at floor-level for easy unloading



SCAN ME

DRUM ROLLERS



456 Series Hydra-Lift Drum Rollers

- Easy Floor-Level Loading
- Hydraulic Power Tilt
- Variable drum RPM

DRUM ROLLERS

- Gentle mixing
- 30-55 gallon (114-210L) steel drum
- Capacity:
1000 Lb. (454 kg) Liquid load
300 Lb. (136 kg) Dry load



OSHA, CSA and EU REQUIRE
ALL Drum Rotators be in
Enclosure with Safety Interlock



5154 Series Stationary Drum Rollers

- Load horizontal drum with hoist
- Fixed or variable speed
- Single or double drum models



201 Series Portable Drum Rollers

- Rock-Over Drum Loading
- Fixed or variable speed
- Capacity:
Liquid load: 500 Lb. (227 kg)
Dry load: 300 Lb. (136 kg) at 20 RPM



DRUM RACKERS



SCAN ME

Morse Drum Rackers

- Safety-conscious drum handling
- Eliminate dangerous bare fork drum handling
- Rack RIMMED 55-gallon (210L) steel or plastic drum
- Rack drum horizontally with faucet for dispensing
- Ergonomic Battery, AC or AIR power controls
- Spark resistant models
- Capacity: 800 Lb. (363 kg)

611 and 620 Series

MORStak™ Drum Rackers

- Rack 56" or 102" (142 or 259 cm) high
- Rack horizontally side-by-side
- Move in tight spaces
- 6 Foot (183) turning radius



MORStak™ Power-Propelled Drum Racker

- Rack to 10.5' (3.2 m) high
- Battery power lift, move and tilt
- Rack drums side-by-side



612 and 622 Series

Horizontal Drum Rackers

- NO Tilt Function
- Rack 56" or 102" (142 or 259 cm) high
- Rack horizontally side-by-side
- Move in tight spaces
- 6 Foot (183) turning radius



405 Series

Omni-Lift™ Drum Rackers

- Rack 72" (183 cm) high
- Larger footprint than MORStak™ Rackers
- Lifts drum in arc
- Requires space between racked drums



SCAN ME

DRUM PALLETIZERS

Stainless or Spark Resistant Models
V-Shape Base to Access Pallet

Palletize Upright Drum

RIMMED steel, plastic or fiber drum
Raise drum 19" (483 cm)
Power lift: AC, 12V DC or Air
Manual hand pump lift
Capacity: 1000 Lb. (454 kg)



825H Series
Scale-Equipped

82H Series
Drum Palletizers



81 Series Drum Spotters

- Lower handle to raise drum
- RIMMED 55-gallon (210L) steel, plastic or fiber drum
- Capacity: 800 Lb. (363 kg)

Palletize and Pour Drum

Pour 26" (66 cm) high
Power lift: AC, 12V DC or Air
Manual hand pump lift
Capacity: 600 Lb. (272 kg)



82A-GT Series
Hand Crank Geared Tilt



82A Series
Grasp Drum to Turn by Hand

TRUCK - DOLLY - CRADLE



SCAN ME

160 Series 4-Wheel Drum Trucks Best Drum Trucks you can buy

- Rough terrain, spark resistant, stainless
- Long handle for extra leverage
- Fully supports drum weight
- Palletize drum
- Dispense into pail
- Stand upright for storage



Clamp+GO! Dolly Handle

Attach to round dolly
Easily disengage



Drum Dollies

Round or square dollies
Steel, spark resistant
or stainless steel

2 Wheel Drum Trucks



3 Wheel Drum Truck

No-Spill™ Drum Truck
Transport upright drum



Drum Cradle Trucks Easy rock over loading



SCAN ME

5-GALLON PAIL HANDLERS



PailPRO™ 5-Gallon Can Tumblers

- Mix contents inside closed cans
- No exposure, No mess, No clean-up
- Single or Double Can Tumbler
- OSHA, CSA and EU Require enclosure with interlock

83 Series PailPRO™ 5-Gallon Pail Handlers

- Lift, move, pour 5-gallon (20L) pail
- Dispense 5 feet (152 cm) high
- Battery Power or Hand Crank Lift
- Pour between legs or extended reach



PailPRO™ Below-Hook Can Tipper



PailPRO™ Below-Hook Pail Lifter



PailPRO™ 5-Gallon Pail Dollies



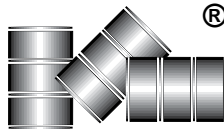
PailPRO™ Can Tumblers
Single and Double can models
Standard or stainless steel



PailPRO™ 5-Gallon Pail Truck

MORSE

The Specialist In Drum Handling Equipment



Morse Manufacturing Company, Inc.

103 Kuhn Rd.

Syracuse, NY 13208

Phone: (315) 437-8475

Fax: (315) 437-1029

Email: info@morsedrum.com

Website: morsedrum.com



Drum and Pail Heaters

Flexible band conforms to drum

Adjust thermostat to maintain temperature



Drum Faucets

Iron Molasses Gates

Poly faucets



MORplug™ Drum Wrenches

Fit virtually any steel or plastic drum

Ductile iron or spark resistant models



Drum Hand Pumps

Drum Pumps to dispense liquids

Available from:

S&G ENTERPRISES INC.

262-251-8300 Fax 262-251-1616

<https://www.ramflat.com/morse/>

Morse@RamFlat.com